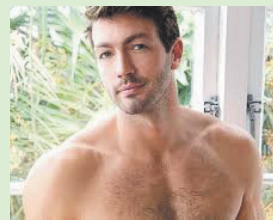




Inside



Nepal recovers. Page 4.



Men's health. week.
Page 7.



Promoting Opunake.
Dr Shaw gives a
few pointers. Page 5



Taranaki Arts
Trail. See page
22-23.

New innovations in
farming. See page 12.

Three teams one club

Twenty one years ago three rugby clubs came together to form the Coastal Rugby Club. Last weekend it was time to remember the time when Opunake, Okato and Rahotu buried any former differences and came together as one, and to reflect on what's happened in the years since.

On Sunday there was some question as to how the grounds at the Rahotu Domain would hold up, given the previous day's rain and the 27 games of rugby played then, featuring all grades from Under 6s up to seniors.

On the same weekend Coastal Rugby celebrated their past, the club's future hopes were playing their games on Saturday morning, with cars parked way past the Rahotu cemetery, something rarely seen on normal playing days.

After Saturday night's birthday bash, it was time for the old timers to play on Sunday, with each of the three clubs which came together to form Coastal Rugby putting forward teams for 10 aside rugby, where players had to be over 35.

"Today's a day for rivalry," Wayne Chapman said. "It's not Coastal. It's Okato,



Coastal Rugby patron Margaret Fleming and one of our future stars Harlen Goodin cuts the 21st cake.

Rahotu, Opunake. After that we all get back together again."

Wayne had played for Rahotu, and played for Coastal back in 1996, the first

time they won the Taranaki championship.

"Everyone had pride back then, and we've still got that now. We don't forget where we came from."

The decision to combine the three clubs had been a good one, he said.

"After 21 years, it's starting to show how well it's all worked out," he said.

In more recent years, Coastal again were Taranaki club champions in 2012, and beaten finalists last year.

Continued page 19

Bus services under review due to poor patronage

Declining patronage and the opening of the new Coastal Care facility has led the Taranaki Regional Council to rethink how it runs bus services to and from Opunake.

The council started the Southlink bus service in

2007, adding the Hawera-Manaia service in 2009. Now they want to retender them.

Proposed changes include axing the Manaia to Hawera return service via Ohawe and the Opunake to Hawera return via Eltham and Kaponga services. These two weekly services would be replaced by an Opunake to Hawera via Manaia run on a day yet to be determined. It is proposed that the weekly Opunake to New Plymouth via Parihaka

service continue.

The council is seeking feedback from the public, so anyone objecting to the proposals has until June 19 to let the council know what they think.

Currently the Manaia to Hawera service which leaves on a Tuesday has an average of only four passengers per trip, reflecting a long term decline in patronage on the service," regional council transport manager Chris Clarke said.

"We still propose to provide Manaia residents with a service but on a different day."

The current Opunake-Hawera service which leaves

Opunake on Fridays has also had low patronage with an average of only three passengers per trip.

Continued page 3

COASTAL MACHINERY SALES REPRESENTATIVE

JOHN JUDGE

Phone
027 538 7387
06 757 5582

For all your
machinery enquiries

NORWOOD 146 GILL ST
Farm Machinery Centre NEW PLYMOUTH
PH 06 757 5582



The Opunake-New Plymouth bus service (pictured) may be set to continue unchanged, but the Taranaki Regional Council is looking at making changes to less economic bus services.

MEAT SPECIAL



BEEF BRISKET \$10.99/kg
PORK LEG ROAST \$9.99/kg
Valid 4 June - 18 June

Support local and buy your fresh
quality fresh meat at



4 SQUARE 45
77 TASMAN ST
OPUNAKE
06 761 8668
OPEN 7am to 9pm EVERYDAY!

HARDINGS

FUNERAL SERVICES LTD
17 REGENT ST HAWERA

*Our professional attention to detail
& empathy is our hallmark*

PHONE 06 278 8633

SERVING OUR COMMUNITIES FOR 3 GENERATIONS

Call us today to advertise on
06 761 7016

RENTAL VEHICLES



- CHARTER BUSES
- VANS
- TOUR BUSES

ALUMINIUM SCAFFOLDING FOR HIRE

\$35 per day, \$50 weekend.
More than 6 days \$30 per day.

WATERBLASTER FOR HIRE

Petrol 3000 psi 15L/minC
Cost: Half day \$90, Full day \$120, Weekend \$130. Friday after 3pm return Monday 9am.
Bond for waterblaster and scaffolding \$50.
For more information contact Tracey or Christine at

PICKERING MOTORS

11 TENNYSON ST OPUNAKE PH (06) 761-8363
0800 22 11 20 Email: pickering.motors@xtra.co.nz



MEETINGS:

Sundays at 38 Tayler Street,
Eltham at 10.30am.

Phone 06 764 7358
for other Bible Studies.

Eltham Message Church

Pastor Richard Oliver

We are an independent Bible Believing Church
All are most welcome
www.messagechurch.com

OPUNAKE & COASTAL NEWS

Registered office: 23 Napier Street, Opunake
PO Box 74, Opunake

Telephone and Fax: (06) 761-7016 a/h ph: (06) 761-8206

e-mail: Advertising ads@opunakecoastalnews.co.nz
Editorial editorial@opunakecoastalnews.co.nz
Accounts accounts@opunakecoastalnews.co.nz

website: www.opunakecoastalnews.co.nz

Editor Bernice M'Kellar -
Journalists/Sales Rolland M'Kellar
Bryan Kirk

Advertising/Production: Vanessa Smith
Tina Chapman
Thursday, fortnightly

Delivery: Registered as a newspaper.



The Opunake and Coastal News is distributed free to every home and business within the rural area bounded in the north by the New Plymouth city border, extending east to Egmont Village, and around to the edge of Stratford, south to the Hawera city border and inland to Kaponga and through Eltham.



Letters to the Editor

Flag change

Why does Mr Key need to change our wonderful patriotic flag?

1: His aim is to make New Zealand a Republic

2: To achieve his goal he first has to change the flag

3: What next our national anthem?

Just who does he think he is - the first President of the 'Republic of New Zealand?' God help us.

Patriotism of flag and country has been stripped from the majority of young

people over the years. They have been 'brainwashed into accepting a 'patriotism of sport'. Let's face it, the only time they see our flag raised and our anthem sung is at these sporting events. What they fail to realise is our flag is not there representing sport - the sport is there representing our flag and country. Whatever happened to the flagpoles and the raising of the flag at our schools? The national anthem was sung by all the

pupils - that was when I was at school. It instilled in us a wonderful sense of pride and belonging. This tradition should be carried on today to give our young people a sense of pride and patriotism for this wonderful country. The wonderful flag we have is a big part of our history. New Zealand's Army, Navy and Air Force fought, and many died in those terrible wars. Many who fought for our flag and country are alive today. Changing our flag

would be like tearing their hearts out - those brave hearts who fought for this flag and country.

War does not decide who is right. War decides who is left.

So Mr Key in this scenario I don't see you having a heart. Let's see if you have guts enough to spend \$26 million of taxpayers, money on a whim and hidden agenda.

Pat Dudley
Opunake

Memories of Kina Rd School

I was born in New Plymouth, and started school at Kina Rd Opunake in 1939. I would like to know if anyone has a photo of the one room school at Kina Rd, and if possible a photo of where it is at the present site. I would be grateful if I could get the two of them.

My father milked cows for the Public Trust on a farm, that going from the Oaonui Store was just before the factory. Vivid memories of the school include a time when a car broke down outside the school and I helped the senior boys to get it started. One boy said "don't push it too fast, we could be a long time from school."

Then there was the time a senior boy said to the sole female teacher she had awful red marks on her face. She had left her mirror at home, and you guessed it, we had a half day off school."

I remember the first male

teacher living in a tent which was very cold, and a dairy farmer named Combs or McCombs who was first to the factory.

If anyone can help with the photos, I would like to know the cost and the postage,

Peter James Fox
Tauranga

We have managed to locate a photo of the former pupils at Kina Road School taken from the excellent Oaonui Hall centennial booklet 27 years ago which we reproduce with

thanks to Andrew Pentelow who loaned us the booklet. Perhaps our readers have a photo of the school.

Editor



EX-PUPILS: KINA ROAD SCHOOL
Back Row (left to right): R. Simpson, G. Gibson, R. Baylis, G. Burrows, K. Crawford.
Second Row: G. Gibson, E. Baylis, D. Baylis, D. Couchman, L. Pentelow.
Front Row: A. (Couchman), F. Pierce (Baylis), E. Briscoe (Boardman), M. Orbell (Gibson), J. Upson (Pentelow), V. Martin (Clark).

BBC: (Bible Believer's Corner): Hebrew

BBCHebrew has to be read from right to left; opposite to English, but old Hebrew is even more weird, and more wonderful than that. It is a pictorial language. Here's an



This is a picture of an ox head. It means strength,



The second picture is of waves of water.

The third is the picture of a seed. It means life.

As in any language, putting letters together creates words. In Hebrew it is the underlying meaning of each letter that combines to create the word. For example, an ox head followed by water

means strong water, or glue. Glues were made by boiling animal skins, hence the link. Now if we add seed, we have the glue that holds life together. And those three letters are the old Hebrew word for mother.

There are many human inconsistencies in life. There is, however, one trait that is consistent through all cultures and through all time. It is a mother's love for her child. It is probably the most consistent human feeling. It is also the most important.

Old Hebrew is far more than just a pictorial language. It is also a relational language. It shows the importance of a good mother in the structure of society and family life. She is the glue that holds the family together; something our current society seems to be forgetting.

The Bible tells us (Isaiah

49 v15) that God's love for us is stronger than a mothers love for her child. God has an even stronger and more consistent love for His children than a mother. And He wants us to place absolute trust in Him in the way a young child trusts its mother.

You may have noticed that, with a few minor adjustments, the ox head became our "a", the water became our "m" and the seed became our "n". But there is something else. Old Hebrew is not just pictorial and relational, it is also phonetic. Reading from right to left try speaking that word by pronouncing each letter in



N M A

You can read Ancient Hebrew!

Amen is what we say after each prayer and indicates a child's trust in God.

Richard Oliver
Pastor Eltham Message Church
www.messagechurch.com

Correction

We apologise for the interchanging on captions on the story entitled Two New Businesses in the last edition of the Opunake & Coastal News.

The main caption should have stated Brian Day from Surf Highway Motorcycles; the other caption Brian Clark, manufacturing surfboards.

Editor

Bus services under review due to poor patronage

Continued from page 1

The big loser from the changes would appear to be Kaponga, which would be left out of the proposed new service.

“This reflects the record of very low patronage – only one single passenger travelling infrequently from Kaponga,” Mr Clarke said. “This is a distinct drop from previous years when many passengers regularly used this service.”

The opening of the new Coastal Care Health Centre is another reason given for reconsidering the existing services.

“It is too early to say what impact the Coastal Care Centre may have, but we recognise its development and success may drive a change in future travel patterns,” Mr Clarke said.

Deadlines for the Opunake & Coastal News

Could readers please note the following deadlines. Editorial 5:00pm Monday on the week of publication Adverts: 12noon Tuesday for display and classified adverts on the week of publication. We are going to have to strictly impose these deadlines in order to meet our deadline with the printers late Tuesday night. We hope readers will appreciate this and co-operate in helping us with this.

Editor

With medical services, social workers, IRD and Work and Income due to set up shop here, there might not be the same need to travel elsewhere.

“Rather than people needing to travel to Hawera to access some health and social services the need might be to deliver them to the Opunake Centre,” Mr Clarke said. “We want to reassure local communities that we recognise opportunities where change may be needed and can build flexibility for service changes into the new contracts.”

At the May meeting of the Egmont Plains Community Board, South Taranaki District Council community development manager Marcia Haigh said the message coming through from the regional council was quite strong.

“They require feedback on

these proposals or they will go through.”

Community Board chairman Craig Dingle said the message appeared to be “use it or lose it.”

On Friday, six people were waiting to take the Hawera bus.

One passenger who didn’t want to be named said it would be disappointing if the service wasn’t there.

“It’s cheaper for me to go by bus than use my wagon,” he said. “Having it on another day wouldn’t bother me, but there’s a lot of people who might not be able to go on another day,” he said.

One woman said she would like to see the Hawera service retained.

“It suits me fine. I use it twice a month at least, and it’s always here when I need it,” she said.

Helen Braithwaite had taken the bus from Manaia

and was catching the bus to New Plymouth. She said she was disappointed people from Hawera hadn’t been supporting the service.

“I thought this thing might be coming,” she said. “I’ve been using the bus for the last three or four years. We can suggest, we can put our views forward, but if things don’t work out, they have the final say.”

Chris Clarke was there to walk to people using the bus about the proposed changes.

“Today you have more people on the bus. Next week you might have only two or three,” he said. “We aren’t looking at forcing anything without offering another option. We are putting out a few ideas. We might lose some users if we change the service, but we might gain some more as well,” he said.

At that point, the regional council had received three submissions, he said.



These cute 6 week old Jack Russell Fox Terrier puppies were photographed with their proud Mum. They’re for sale from Equine Services in Weld Road, Oakura.



You’re never too old

LEFT: Spotted at Jean Sandel Retirement Village in New Plymouth, outside one of the apartments of one happy newly wed couple.

NEED FRESH IDEAS?
Let's create your company's growth strategy together!

HUGHSON & ASSOCIATES
Accounting for the future, today

Hawera - Opunake - Patea - 06 278 4169
OPUNAKE OFFICE
OPEN EVERY WEDNESDAY FROM 10am TO 4pm

WEST COAST MONUMENTAL
* HEADSTONES *
* GRANITE PLAQUES *
* BRONZE PLAQUES *
* DESIGNER MEMORIALS *
* PORCELAINS PHOTOS & PLAQUES

TALK to Callum or Mandy TODAY
Showrooms @ 292 Devon St, East - New Plymouth
Miranda St, Stratford, opposite RSA (by appointment only)
06 758 8625 - 24/7
www.monumentcentre.co.nz callum@creativestone.co.nz

INGRAMS
Contracting LTD
PERMANENT HIRE BINS

LOCALLY OWNED AND OPERATED
• Ph (06) 278-4786 • 027 4458 701 • A/Hrs (06) 278-7063
Collins Street • Hawera

Risco Wireless Security Alarms

- Camera Sensors, photos of offenders emailed off site during activations.
- Control from anywhere in the world via phone app or text messages.
- No phone line needed.
- Can be monitored.
- CCTV camera systems also available.

FREE NO OBLIGATION QUOTES

GRAHAM LYNCH SECURITY
Business/Residential & Rural Alarms, Digital Camera Systems, Driveway Beams, Monitoring.
SERIOUS ON SECURITY
Phone 06 2788749
Mobile 021 759624

Visit www.lynchsecurity.co.nz for more information

IHAIA MOTORS
for
A GRADE REPAIRS

- Tyres
- Batteries
- Lubes
- W.O.F
- Panel beating
- Painting
- Farm Bikes
- LPG
- All mechanical repairs
- Insurance work
- Radar Detectors

AT COMPETITIVE PRICES.
Tasman St, Opunake
Ph (06) 761-8502

SINCLAIR
FARM KILL AND PROCESSING

- Beef
- Sheep
- Pigs

Call Colin or Bridgitte - 06 765 4460 • 0274 629 282
121 Cordelia Street, Stratford

• New Houses • All Farm Buildings
• Alterations • Kitchens
• Roofing • Decks

For all your building requirements, contact us today
HEARTLAND CONSTRUCTION
48 Allison Street - Opunake - Taranaki - Phil on 027 236 7129

Earthquake slams village with Taranaki links

A Himalayan village which has links to Taranaki was hard hit by the second of two earthquakes to strike Nepal.

The relationship with the village of Kharikhola had its beginnings back in 1995 when Ngima Dorji Sherpa, founder of tourism company Nepal Myths and Mountain Trails led a group which included Alan Jellyman from New Plymouth on a trek in the Himalayas. After that Alan, together with Robyn Drake from Inglewood set up the Band Aid Box Trust. In 2005 Ngima asked their help in bringing a medical camp to the hospital in Kharikhola.

In the years since, they have led several trips to the Himalayan village, taking medical supplies with them. Last year Robyn led a group of Taranaki women on an expedition to run a sewing workshop in Kharikhola.

Lions District 202D, which covers Taranaki, has also been involved with the Himalayan town. In 2010, Normanby Lions Club member Roger Malthus was on a trek to deliver medical supplies here, when Ngima issued a challenge to the Lions to come to Kharikhola and help set up a clean drinking water project for the local high school. In 2013, Roger led a 10 strong group representing Taranaki Lions clubs who worked with locals to make this happen.

Later that year, Ngima visited Taranaki to thank those who had assisted his home town.

Now Kharikhola faces new challenges.

Robyn has been in touch with Ngima who lost his own home, the Kharikhola guest house in the quake.

"Over 50 per cent of the homes are completely destroyed," she said. "The entire medical clinic is a pile of rubble. Most of the Kharikhola High School has gone, and all the outer monastery buildings have gone. Around 2600 people are affected. With three or four weeks until the monsoon, it's vital roofing materials are bought and installed as soon as possible."

The writer of this article was a member of the Lions group which travelled to Kharikhola two years ago. We flew from Khatmandu to Lukla in the Himalayas, billed by Facebook as the world's most dangerous airport, on a 14 seater aircraft. The tarmac on which we landed resembled an oversized basketball court more than it did a runway. From Lukla it was two days walk to Kharikhola, population around 4000. For the next three weeks we didn't see any form of motorised transport. The only way in or out was by foot. On the way we passed over swing bridges reminiscent



Pupils and staff at Kharikhola High School in 2013 with water purification equipment brought over by members of Taranaki Lions clubs. The school was largely destroyed by recent earthquakes in Nepal.

of the one from which Sean Connery's character plunged to his death in the 1970s movie *The Man Who would be King*. All the while, the presence of the Himalayan mountains served as a reminder, if one was needed, of our insignificance in the grand scheme of things.

On arriving at Kharikhola, we were taken to the high school, which has a roll of 800. We were made to feel like rock stars, as school pupils cheered our entry on to the assembly stage. In the next week, we worked with the locals to pipe clean water from a spring a kilometre away to a filter near the high school. The school's principal and the board chairman were among those who rolled up their sleeves to help get the project done.

The figure of Ed Hillary

looms large in this part of the world, with the iconic portrait of Hillary atop the world's highest mountain seen in both the high school principal's office, and at a small country primary school we visited during our stay.

On our way back we visited Namche Bazaar, the market town popular with trekkers, 70 kilometres away from the epicentre of the second quake, and home to the memorial to Hillary's erstwhile climbing companion Tenzing Norkay. We visited Khumjung, home to the school which Hillary founded. We also visited the hospital he established in nearby Khunde where we were shown around by the resident doctor. It was with great sadness then that we heard news reports that this charming man had lost his home in the Anzac Day quake.

The Nepali people we



Taranaki Lions Club members visiting and being shown around Ed Hillary's hospital at Khunde after going to Kharikhola in 2013. According to news reports the hospital doctor lost his home in the first earthquake.

had dealings with treated us well. They were unfailingly courteous, and although much has been made of their poverty, they were always honest. We always felt our belongings were safe as long as we were

around them. The ties linking our two countries are strongly valued on both sides.

Bryan Kirk

AEA STAINLESS Jetter Tubs

Opunake Service Station
111a Tasman Street, Opunake



from The odd Bolts Box,

repair, replace, rebuild mild and stainless steels, bolts, pins, bushes, washers or start from scratch! Concrete cutting, yard galvanised pole repairs and same day service!

111A TASMAN ST, OPUNAKE
PH: 06 761 8834

L
A
W
Y
E
R
S

OPUNAKE LAWYERS

Thomson O'Neil & Co.

Our Opunake Office is attended by:

Robert England on Wednesday & Fridays
for buying and selling houses, farms & businesses;
trusts, wills and estates.

Neal Harding on Thursday, for residential
sales and purchases, family, district & criminal court
matters, civil & business matters.

FOR ALL YOUR LEGAL REQUIREMENTS

30 TASMAN ST, OPUNAKE
PH: 761 8823

POWERWORX

Power Supply Rural & Residential

Design, upgrade and repair overhead and underground power supplies

- Powerco Approved
- Underbores - wires and pipes
- Powerline maintenance
- Fault repair
- Subdivision power installation
- Vegetation control around powerlines
- Network connections
- Transformer & line upgrades
- Specialists in rural power servicing and installation

0800 877 746

Taranaki Region
Contact Bruce Wilson Manager
58 Glover Road, Hawera Ph: 06 278 4514
Email: powerworx@obertech.co.nz

Promoting Opunake – food for thought from business studies lecturer

A webcam camera at the Opunake Surf Life Saving Club looking out on Opunake Beach and another from the centre of town looking over the Mountain was just one of the ideas to promote Opunake suggested by Robert Shaw at the Opunake Business Association extraordinary meeting held on Monday May 25.

Around 30 people attended the meeting held at Opunake's Everybodys Theatre. Robert who lectures in business studies and was guest speaker gave a most interesting talk on how to promote the district. It was clear Dr Shaw who moved to Opunake 12 years ago from Wellington had put some thought into the presentation which included some interesting photos.

In recent years he has divided his time between teaching in China and Opunake where he owns a house.

For 18 years he was an elected member of the Greater Wellington and the Porirua City Council and has spent the last few years teaching at the School of Business in China.

He began by outlining what he's been doing in China, a country he described as very different to New Zealand. It's an enormous country, so diverse, he said indicating a map of China divided roughly into four quadrants, each with a population of America. He was based in the south.

"The Chinese think very differently to us," he said. His own extensive experience in local government contrasted with how things are done in China.

The totalitarian regime in China means that decisions are made which would not happen in a democratic country. For example the Government decreed that all lessons would be taught in English. Recently it was decided that all children would learn



Robert Shaw pointing the way.

soccer. Robert said he taught mainly female students. Often their parents haven't gone to university. Their parents and grandparents fought the Japanese, still a grim memory. He described the students as "incredibly quiet and incredibly polite. They will never argue with you or come up with their own ideas." After this background, Robert then went on to discuss the Developmental Stages for business communities.

He says there's the potential of local government to be involved in developing communities. Community Boards tend to be driven by the Council but "you can turn this round" he said.

"You can drive the Community Board - make them work for you."

Councillor Bryan Roach who was at the meeting, interrupted at this point to state that Marcia Haigh, the South Taranaki Community Development Officer, comes to Opunake once a week. He

also pointed out the discretionary grant which people can apply which the Egmont Plains Community Board control.

"There are the resources there but you're the bad guys because you don't know about it," quipped Robert in reply.

He said the Business Association should be driving the council and described a light canopy in Porirua as an example.

Commenting on Opunake's "great website", Robert Shaw suggested a webcam centred on Opunake Beach and on the mountain could additionally help promote the area citing one centred on St Georges Square in Glasgow he accessed before going to Scotland for a visit. "It would cost a couple of thousand dollars", he said.

Other ideas included a restaurant overlooking Opunake beach.

Opunake also has a rich history. He also spoke about the shipping marker at the

top of the road leading to the beach. "What about the other," he said.

her brother came back to Opunake after World War I she set out to write a book entitled "A Graphic Outline of the Great War: Deeds that Saved the Empire," said Robert.

Other intriguing historical facts Dr Shaw had unearthed included the location of the three Armed Constabulary redoubts in Opunake. He spoke also about Gustav Von Tempsky and "The Forest Rangers" and the connection of Te Rauparaha and Te Namu pa.

It was a fascination address which left much food for thought.

The next meeting of the Opunake Business Association will be held on June 8 at Everybodys Theatre

at 5:30pm. The Opunake Business Association usually meets on the first Monday of the month however because of Queens Birthday weekend, the usual monthly meeting was postponed a week till Monday June 8. Anyone with an interest in Opunake is welcome to come along.

One of Jacquie Sturm's poems:

...planted, nurtured
Trained, pruned, grafted me
Only to find a native plant
Will always a native be.
How being out of step, place,
time, joint
In time becomes a preference
Not a pain, hardly matters
now.
(In Loco Parentis)

PROGRESSIVE FENCING

FOR ALL YOUR FENCING REQUIREMENTS:
Agricultural & Electric, Fencing & Shelter Belts,
Stockyards, Retaining Walls, Residential,
180 Rev. Post Rammer.
Member FCANZ
Ph Steven on (06) 764-5393 or 021 298 5106

Coastal Welders 027 255 8677
06 752 8138

BOOK YOUR WINTER SHED MAINTENANCE NOW!

Call today!
We are a local company training local people.
Email us at coastalwelders@xtra.co.nz
WAREA

Dedication acknowledged

At a special committee meeting held recently two members of the Opunake Players received Life Member certificates. They were Susie Stanley and Mike Smith. Both have given many years of service to the club.

Susie has been active in all aspects of Drama; directing, acting, co-hosting a large costume department, catering, and set painting, as well as being on the committee.

Likewise, Mike has been active directing, acting, singing, lighting, sound, set construction, working bees and being a general problem

solver. If we have a problem that seems difficult, Mike will say "I've got an idea, leave it with me for a couple of days." Nine out of 10 times the problem is solved. He has also served on the committee for

many years.

The best thing is, they are both young enough to carry on the good work for many years to come.

Meads Motorcycle Service
9 Main South Road Manaia
Ph 06 274 8216 Mobile 027 2104673

For all Your Farm Bike Needs

Precision Helicopters Ltd
Precise in nature, action and performance

For all your helicopter work

GPS Guided:

- facial eczema prevention
- granular and liquid fertiliser application
- weed control
- lifting

Free Phone: 0800 246 359
sales@precisionhelicopters.com

SHOE & BOOT SALE

by SCARPAS David Deacon

Winter Shoes are available!

Also
SHOE, BAG & LEATHER REPAIRS
 244 Broadway - STRATFORD
 Ph (06) 765 5591 - Fax (06) 765 5594

Garage Doors Specialists



WINDOWS • DOORS • CONSERVATORIES

- Sectional, Roller, Tilt.
- Automatic Openers
- Repairs & Maintenance

Call for a Free Measure & Quote
 Ph 06 7588073

Trans Tasman Training Ltd

171 Juliet Street, Stratford 4322
 www.transtasmantraining.co.nz

Truck Driver Training: Class 2-5 Forklift Courses
 OHS, F, NZQA accredited wheels, tracks, rollers
 P and V endorsements

p: 06 765 8333 Stan: 027 951 5183 Lee 027 354 9678
 transtasmantraining@gmail.com

One Stop Shop - Mobile Recording

Public and Private Functions,
 Corporate, Conferences, Music Videos,
 Documentaries. Graphic Design on CD/DVD/BD.
 Creation & Production of Original Music.
 Editing Audio, Video & Still Pictures.

Colour Conversions Recording Studios Limited

Cell. 027-897-8941
 2D & 3D Video and High resolution Audio.
 Duplication and Disc Face Printing of
 CD, DVD and BD.
 Explore the possibilities of Multi-camera
 Multi-track recording for each event.



Bringing training to your doorstep

After successfully running courses in Stratford and Bell Block, Trans Tasman Training is looking to do the same in Opunake. They offer courses as diverse as transporting dangerous goods, and all commercial licences, including licences for bulldozers, trucks, diggers, and forklifts. They also do on-site safety assessments for those wanting to be compliant with health and safety regulations. "We're sticking our toe in the water to see how much interest there is," trainer Lee Hurley said. "If we could get two or three people here once a month, we would be very happy indeed." Office space has already been rented, and he hopes to get going in Opunake as soon as possible. The courses he would run would depend on what potential students wanted. The courses have the advantage of not requiring people to travel huge distances to study. "It's easier for one trainer to go to a small town than it is for half a dozen people to go to a bigger centre," he said. He also believes they are well suited to the local farming and business sectors. "Lots of companies run on a skeleton staff, and can't afford to lose all their staff for a whole day to go on a course." Trans Tasman Training are also prepared to do the refresher courses needed for using forklifts in the



Lee Hurley bringing Trans Tasman Training to Opunake.

workplace and transporting dangerous goods. After starting off in Stratford, Trans Tasman Training branched out with courses in Bell Block, where Lee says there has been considerable growth in numbers since he started off with one student three weeks ago. Now, as well as Opunake, they are looking to start up courses in Hawera. Although courses would be geared first of all to meet the requirements of people in that town, people from elsewhere wanting to do a course not immediately available where they are could also be fitted in. "You would never be more

than a few days away from getting the licence you want." Lee said they would also like to put together an intensive week to 10 day course covering the likes of forklift driving, handling dangerous goods, load restraints and handling truck-mounted cranes. Stan Chesswass set up Trans Tasman Training two years ago, and Lee came on board after that, bringing his more than 30 years experience as a trainer with him. He moved to Eltham, where he now lives, seven years ago. "I was born in Auckland,

but I am a Taranakiite by choice," he said. "People here don't know how lucky they are. There's a magnet in that mountain that keeps drawing people back here."

He says the job brings a lot of satisfaction with it. "We like to think we are different because we are passionate about our training. What we want is someone who can come off our course and demonstrate what they have been taught and have good practical skills they can take to the workplace."

Opunake Volunteer Fire Brigade

I would not like to say how many times our fire crew have not been able to quickly find the address they are responding to due to the RAPID (Rural Address Property Identification) number not being clearly visible. Our fire engines have not been blessed with a GPS (Global Positioning System) so we have to rely on a mixture of good old local knowledge, letter box names, dairy and rural numbers, and smoke signals. If any of these are not present, our response

time can be hindered. All of the Fire Service emergency calls go through a call centre in Wellington, so they are not familiar with our area. Therefore it is vital that you give them as much up to date information as possible so we can respond promptly. I say up to date, as we had a call out a while back where the caller gave land marks that had changed about 25 years prior. Instead of us going straight there, we took the long way. Luckily, it wasn't life threatening, but it could have been and every second can count.

One of the easiest things our country cousins can do to help us pinpoint exactly the property we are responding to, is have their RAPID

number clearly visible. This number is unique to each property, as it is based on the distance along the road from its starting point, or intersection with another road. The marker post is dark blue with either white or silver numbers and is placed somewhere near the letter box or front gate way. If yours is overgrown please put your gardening gloves on and give it a weed or spray so the number can be seen. If on the other hand yours is missing, give the South Taranaki District Council Environmental Officer a call on 0800 111 323 and a replacement will be dropped off.

Another way you can help any of the emergency services to find the incident is to

have someone out on the road waving like a flag in a howling southerly, or at night flashing their car or torch lights. This can save valuable time and make our job a little easier. After all, you want to do your best to protect your loved ones and property, so if possible have someone out the front.

I am happy to report that the fire engine has not been rolling since May 14. In fact, the brigade has only been called out 13 times so far this year, down by six at the same time last year. Something I find extremely pleasing is the drop in motor accident call outs in our area, and I put this down to the great job our local policemen are doing for our community.

The Flaming Tree

Accident & Medical Clinic



Clinic hours 8am-8pm
 No appointment needed
 24 hr urgent medical care
 X-ray
 Pharmacy

OPEN EVERY DAY

Richmond Centre
 8 Egmont St New Plymouth Ph(06) 759 8915

ACC and RNZCGP Accredited



2475 Surf Highway 45 OKATO
 PH/FAX 06 752 4044 MOBILE 0274 448106
 Email: barronz@xtra.co.nz

- Houses
- Alterations
- Decks
- Bathrooms
- Kitchens
- Roofing
- Fences
- Concrete
- Cowsheds
- Farm Buildings

by the wind wand

MEN'S HEALTH WEEK

Men, get proactive with your health

Generally men do not seek advice from their doctor, less than 50 per cent turn up for routine checkups and the 'boys don't cry' approach is often to be blamed for seeking advice at a late stage. This is alarming as New Zealand men live on average four years less women. Latest statistics available tell us that one New Zealand man dies every three hours of a potentially avoidable illness; with death rates for Maori men nearly double that of non-Maori (Statistics NZ) One in eight New Zealand men will experience serious depression during their lifetime. Suicide and violence related deaths are four times as likely among men. Six out of ten New Zealand males are overweight. Nearly a quarter of New Zealand men smoke and 27 per cent of men have potentially harmful drinking patterns. It is thus no surprise that men die from heart disease and chronic liver disease at twice the rate for women. Seeking help from your doctor is not a sign of weakness; it is about taking responsibility of your health. Most people who have high blood pressure don't know it, and high blood sugar and cholesterol levels don't usually show signs until they spiral into disease. A family history of any of the mentioned conditions already rings alarm bells and calls for action. Prostate, colorectal cancers, as well as osteoporosis can be invisible



Men's Health week runs from June 8.

for some time and remain undetected until medical tests and examinations are carried out. If a man's father or a brother had prostate cancer, his chances are doubled to develop prostate cancer, and if both his father and a brother had the disease then his chances are four to five times higher. One in ten NZ men will get prostate cancer in their lifetime. Surveillance and early detection are thus paramount. Diabetes has the potential to have devastating complications if left undetected or ignored. Prior to diagnosis it can be a silent disease with damage to the eyes, liver, kidneys, heart and nervous system occurring over time. Undetected it may lead to heart attacks, liver damage, blindness, kidney failure and uncomfortable

nerve symptoms, usually in the hands and feet. A simple blood test can raise awareness of lingering diabetes, and prevent or slow down long term complications. Illnesses related to smoking and alcohol consumption kills more men than women. Smoking increases your risk of heart events including stroke. Smoking causes more deaths every year in New Zealand than road crashes, suicide, skin cancers, drowning and homicide combined. Latest research shows that men are at greater risk of not only heart disease, but also stroke, with stroke being the second biggest single cause of death, and the largest cause of disability in adults in New Zealand. A simple health check can detect health issues in the early stage, and in some cases

literally save or prolong life. Regular check-ups give your doctor a better sense of your baseline health, and changes can easily be detected. Awareness campaigns aim to encourage men to improve their lifestyle, wellbeing and all areas of their physical, mental, emotional and sexual health. They promote awareness of important male specific preventable health issues, daily exercise and regular health checks. Even if the check-up turns up nothing then a confirmation that you are healthy is great. One of the easiest and most effective ways that men can take care of their health is by getting to know their GP and having a check-up once a year. Do not hesitate, challenge your mates and make that appointment today. Dr Marlene Bezuidenhout

SCOOTERMAN & BOBBY

PRIDE MOBILITY LIFT CHAIRS

C1	\$ 999	Lc101	\$1995
C101	\$1349	LC107	\$2099
C5	\$1395	LL805	\$2695
D30	\$1870	LC358XL	\$3495
C6	\$1895	T3	\$3195

Scooters, Wheelchairs, Walkers, Living, Bathroom and Toilet Aids, Commodes, Crutches, Canes, Batteries, Servicing & Repairs
View On Line or Brochures can be posted

FITZROY VILLAGE - 769 9061 or 0800 929341
www.scootermandbobby.co.nz

www.gotitcoveredsouthtaranaki.co.nz

Got it Covered
South Taranaki

Canvas work, PVC, Saddlery,
Vehicle Interior restoration, Motorbike seats, Trailer covers, Sunshades, Tonneau covers, Swimming pools and Sandpit covers.

Got it Covered South Taranaki
P. 06 278 8255 - M. 027 508 8958
11 Fitzgerald Lane, RD 13, Hawera
www.gotitcoveredsouthtaranaki.co.nz

Engine Rebuilders
NEW PLYMOUTH

Engine Reconditioning & Automotive Machining

THE IDEAL COMBINATION FOR REFURBISHING YOUR...

- ✓ classic cars
- ✓ trucks
- ✓ tractors

LUCAS
OIL PRODUCTS INC.

Classic Components
ENGINE PARTS

New Engine Parts for Classic Vehicles

Molesworth Street
06 - 758 5263
06 - 758 5262

Time to brush up on men's health

Men's Health Week is underway again this year to encourage New Zealand men to get proactive about improving their health and well-being. During Men's Health Week, which runs from June 8-14, men are invited to find out their health scores by completing an online survey at <http://www.men-shealthweek.co.nz>. This year, an appeal is being made to men's competitive spirit to challenge their mates to do the same to compete for the best score. This year's campaign is promoting awareness

around testicular cancer and the difference diet can make to not only your health, but how you feel.

Testicular cancer is the most commonly occurring cancer in men aged 18-39 years and yet the most curable, if found early. A big step towards improving men's health and well-being is removing the barriers that deter men seeking professional help early. With this in mind, men can visit their local Life or Unichem pharmacy during the entire month of June to get a free Men's Health Pit Stop Check.



Mountainview Medical

We strongly support preventative medicine through timely and regular health checks.

Book early for ROUTINE APPOINTMENTS

Your team of doctors: Marlene Bezuidenhout
Kirsten Cameron
Mitch Feller

Paul Bond
Robert Mellish
Elize Donnelly.

- * Flu vaccines still available - book at reception
 - * Accepting new patients
 - * Visiting dietician, clinical pharmacist, renal physician, Bay Audiology.
- <https://www.itsmyhealth.co.nz/medical-centre/search>

 Support is a phone call away

06 278-0104

 LIKE US ON FACEBOOK!
OPUNAKE & COASTAL NEWS

Families' health still a priority under National

The last week of May was the 2015 Youth Week where as a nation we celebrate our young people. The 2015 theme was 'We are the future/ Kō tātau te ao o āpōpō'. I had the privilege of visiting and speaking to some of the student leaders at Opunake High School and Coastal School. The diversity of talent and skills we have in our young people is something we should be extremely proud of, and was great to be asked some well thought through and challenging questions by the students. We have much to be proud of with the young people in our community and the excellent



Jonathan Young MP for New Plymouth

work of our schools.

Congratulations too to Coastal Rugby for 21 years on the coast. This is a great club that provides a lot of entertainment and opportunity for people on the coast to get together. I enjoyed the

game against NPOB, despite the rain. It's been a long time since it's been impossible to tell who is on either team – due to the mud. Certainly looked like all the players enjoyed it though. Keep up the great work in the club.

It is always great to spend time around the Coast, and was fantastic see the new Coastal Care Centre open and operating. This health centre at the heart of a rural community is a stand out achievement and is leading the way in providing health care to the rural sector.

Delivering better public health services to New Zealand families remains a prior-

ity under National, and we are committing a record \$15.9 billion in this year's health budget to do just that.

The major announcement on Budget Day was our \$76.1 million commitment to hospices and palliative care. We are funding areas which make a huge difference to people's lives by ensuring terminally ill people are as free from pain and suffering as possible. Hospices provide valuable care and support for families and friends, and this investment will ensure they can continue to do so.

National is also investing \$13 million to fund 60 new nurse specialists and help

hospices expand their community care services. These nurses play a critical role in training and mentoring staff across aged care facilities. They will help to ensure that as our population ages, high quality care and facilities remain available to them.

We are helping New Zealanders live longer, healthier lives, free of pain. Before the Budget we reaffirmed this commitment by announcing a further \$98 million to boost prevention and treatment of orthopaedic conditions. This funding will help deliver an average extra 4,000 elective operations per year over the

next four years.

That's more hip and knee operations for those who need them most. Latest figures show a record 161,000 elective operations were performed last year, 44,000 more than in 2008/09 – that's what careful management of our finances delivers for Kiwis.

Also, from July 1, free doctor's visits will be extended to 400,000 more children and their families because cost should not stop parents taking their kids to the doctor.

That's what National is all about, delivering better public health services that make a difference to NZ families.

www.headstonewarehouse.co.nz

Headstone Warehouse

WHERE YOU GO FOR HEADSTONES

Corner Collins and High Sts, HAWERA
Ph: 06 278 5518

209 Coronation Ave, NEW PLYMOUTH
Ph: 06 759 9975

We deserve more from budget

When the Prime Minister visited Taranaki on Sunday a week ago, he shot 18 holes for 84, then proclaimed our region's economic headwinds were temporary.

Oil prices will rebound, he said. Dairy prices won't stay down for long. And then at the closing of the regional National Party conference he was off again. Job done.

It's one thing to pontificate from the golf course on a one day flying visit. It's easy to say don't worry, things will come right.

But there are big issues facing our region and to fix them, to help Taranaki flourish, to keep our young people in jobs, our farmers thriving and small businesses working, we need to speak honestly about them. It is not enough to say things will get better.

He is right about our two most immediate concerns. The fall in dairy prices, which has been well signalled for months, is already hitting



Andrew Little MP

farmers' pockets. That affects our small towns and our provincial cities. I've been hearing from contractors who say their farming work is beginning to dry up, who worry about where the work will come from this year and next. That is compounded by the slow-down of the oil industry and exploration which is hitting our local heavy engineering firms. Retailers are often the next in line to feel these pressures and in a region like ours, everyone is affected.

Last month's Budget was

the chance for the Government to show it understands these pressures, and is committed to doing something about them. Instead, we saw only short-term band aids and a cynical disregard for any long term solutions. There was nothing for the regions in Bill English's Budget. Nothing to show we are serious about growing our economy, diversifying where we can, moving our products up the value chain.

Yes, there was a small but important rise in beneficiaries' incomes announced. But making it easier to live in poverty is not the same as lifting people out of poverty. For that you need real incomes, real jobs, affordable housing, health and education policies that make a difference to everyone.

Yet this was the fifth budget in seven where education has seen funding not keep pace with inflation and demographic changes, and the third in a row where the same

can be said for health.

There are four areas Labour would have focused on in this Budget. They are: positioning our economy so we aren't solely reliant on commodity prices; investing in the regions so our young people don't all move to Auckland for opportunities; putting a real focus on making housing more affordable; and getting our education programmes delivering opportunities for the new economy, for the work we want our children to be able to do in the future.

That's the kind of long term thinking New Zealanders are missing out on. It's what was missing in the Budget.

Our region is rich in natural resources, full of people who have get up and go, who are innovative and hardworking, who want Taranaki to succeed. We deserve more than we got from last month's Budget. And more than the platitudes we have just heard from the Prime Minister.

JONATHAN YOUNG
MP FOR NEW PLYMOUTH

Need to speak with your local MP?
Monthly clinics being held in Opunake. 3rd Mon each month. 10am - 12pm. Opunake Business Centre. Please email or phone to book a time.

NEW PLYMOUTH OFFICE
A: Corner Gill & Liardet Streets P: 06 759 1363
E: newplymouthmp@parliament.govt.nz
W: www.jonathanyoung.co.nz

Funded by the Parliamentary Service and authorised by Jonathan Young MP.
Corner of Liardet & Gill St, New Plymouth

National
www.national.org.nz

Simple, easy to understand legal advice

When it comes to legal issues in the farming industry, you'll find the team at RMY Legal speak your language.

RMY LEGAL

T: +64 6 769 8080 | F: +64 6 757 9852 | 0800 733 837
136-138 Powderham St | New Plymouth 4310 | New Zealand
www.rmy.co.nz

TOMDESIGN02/06

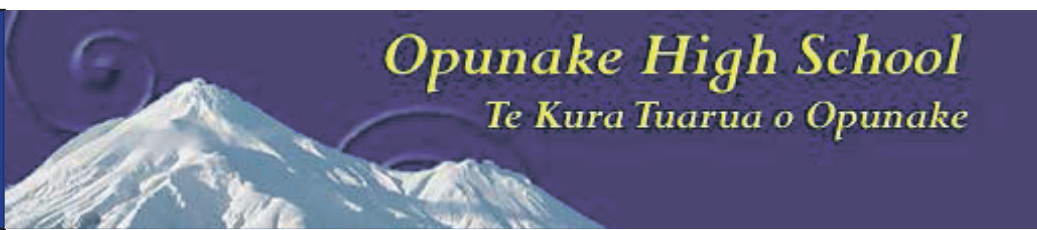
P.O Box 4, Tasman Street, Opunake

Ph: 067618723 Fax: 067617262 Attendance: 0800 288 3632

email: admin@opunake.school.nz

www.opunake.school.nz

Opunake High School
Te Kura Tuarua o Opunake



GROWING GOOD PEOPLE FOR A RAPIDLY CHANGING WORLD
He waihangatanga o te tangata pai i roto i tenei ao hurihuri



**Opunake High School v's Manawatu
50 years**

100 students along with eight staff travelled to Manawatu College in Foxton on Tuesday 26 May for the 50th annual sporting exchange. Staff and students stayed at Paranui Marae for the three day event. As this was the 50th Year of the exchange Manawatu College ex-pupils were invited to attend the celebration dinner held at Foxton RSA. Ex students Robyn Davey, Sarah Campbell, Alistair Cook, Haydn Langton, John McCarty and Phil Hooper competed in the volleyball and netball against Manawatu's ex-pupils, staff and students. This was a well organised trip and very successful for Opunake taking out all but one activity, volleyball. Congratulations to everyone that participated and contributed to a wonderful event.

Sports played: Girls rugby, 1st XV rugby, boys and girls soccer, girls and boys basketball, girls volleyball, netball and ex-pupil volleyball, netball.

Photos: *right* boys soccer,

Below left to right: girls basketball, girls rugby, girls soccer, *bottom* 1st XV rugby Photos taken Taylah Smith



REPORT EVENING

10 June 2015

Wednesday 4 - 7:30pm

This is an opportunity to discuss student learning and progress for your child and is really important. Please make appointment times to come and see your child's teachers.

Open Day

ENROL NOW FOR 2016

- 16 June - Kaponga, St. Patricks, Manaia
- 18 June - Auroa, Opunake Primary
- 22 June - Rahotu
- 23 June - St. Josephs, Tamarango, Matapu

10 am - 1 pm

Parents and Caregivers of Year 7 & 8 students are invited to our Open Day. It is a chance to experience all of the wonderful opportunities we have to offer at Opunake High School.

Our very own school restaurant will provide lunch on these days so please advise attendance for catering purposes.



Proudly supporting the Opunake community for more than 30 years.

www.stos.co.nz



Murder and Mayhem in The Game's Afoot

I have seen some brilliant theatre at the Cue. Particularly memorable was Leading Ladies starring the mayor of New Plymouth Andrew Judd though he wasn't then mayor about an ailing spinster who wants to leave her money to her nieces. An advert placed in the paper to trace them is seen by two down on their luck actors who reply and pretend to be the nieces. Things get complicated when one of the actors falls for a

real niece who turns up. It was farce at its very best. A brilliant script with some fine acting and impeccably directed, it was a true delight and certainly rivalled anything I saw on the West End in London. It won Best Play of the Year at the time.

I have to be honest though, the Cue Theatre's latest offering didn't quite hit the mark.

Called The Game's Afoot

it is a whodunnit, written by the same American playwright Ken Ludwig who says he got the inspiration after seeing Agatha Christie's The Mousetrap in London - the longest running play in the West End, which has been running for 63 years.

The year is 1936 and William Gillette, an American actor, has asked the cast of a successful play he has written, to join him in celebrating Christmas in his mansion.

The play combines mystery with humour and Ludwig's avowed love for Sherlock Holmes.

It is a skilful complicated plot. It had all the elements - an old house, a revolving room to hide the body, dark secrets and a multitude of motives among the gathered guests. Somehow the working in of comedy however didn't quite gel. Such as early on when there is a potential murderer afoot and lights

dimmed, we settle down to watch a séance - always intriguing. And frightening ...until, disappointingly, we discover this too is a joke which several of the players are in on.

They were a diverse lot. Gloria Webby as the exuberant femme fatale Daria Chase and victim having slept with the rest of the male members on set provides plenty of motive for her subsequent and eventual

demise.

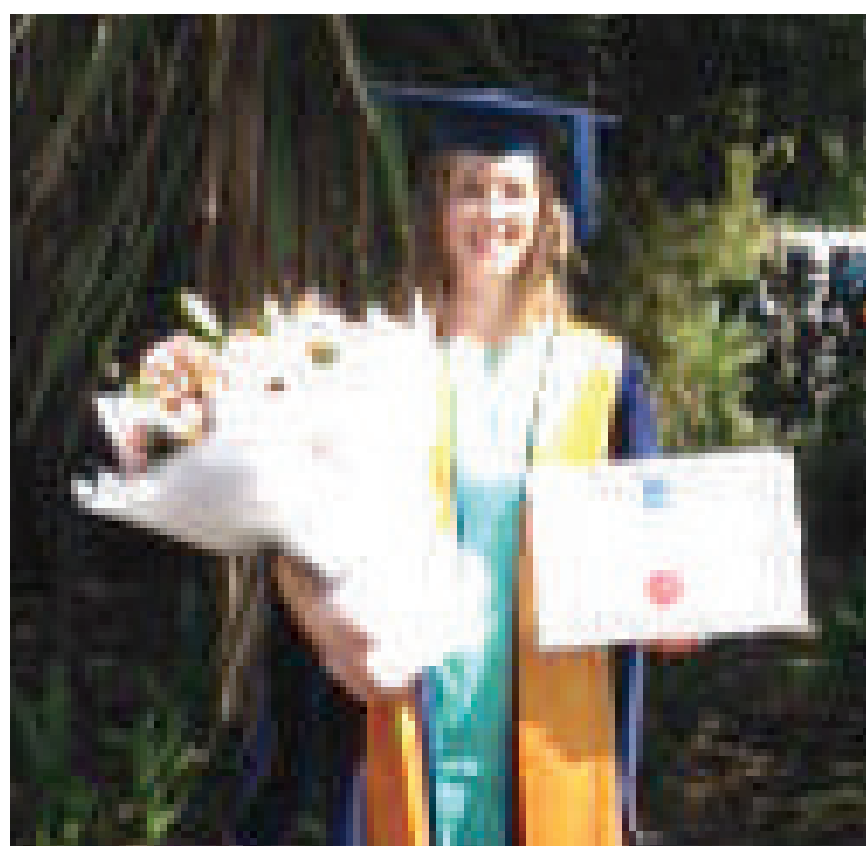
I particularly enjoyed Valda Hinz's Inspector Goring played very straight and convincingly.

I reiterate, Leading Ladies was brilliant, but this play didn't seem to be in quite the same class.

Still you can't win them all. And I rate Leading Ladies as one of the best things I've seen in Taranaki.

Bernice McKellar

New Graduates



ABOVE: Kate Young has recently graduated with a Bachelor of Occupational Therapy from Otago Polytechnic.

LEFT: Brandon Roach has just graduated from Massey University with a Bachelor of Sport and Exercise majoring in Physical Education, and is currently doing a Graduate Diploma in Secondary School Teaching. He is the oldest son of Calum and Susan Roach.

SANDFORDS RURAL CARRIERS

Rural & General Cartage

Specialising in

- Palm Kernel
- Fertiliser
- Aggregate
- Hay & Silage Bales

Livestock Cartage

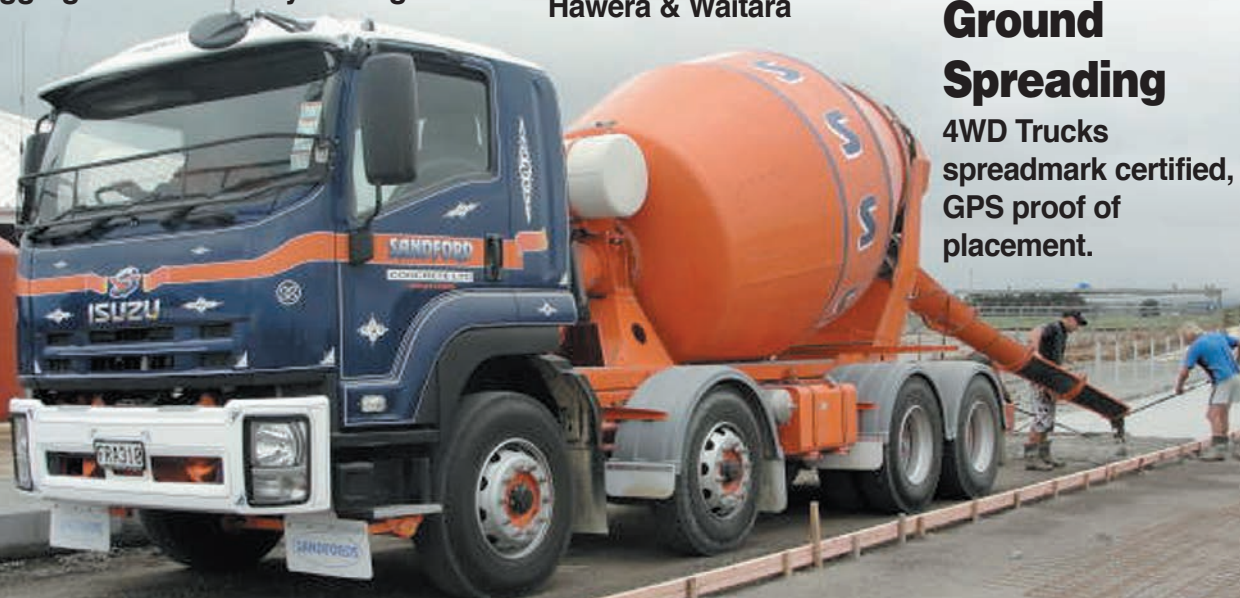
Depots: Okato, Auroa, Hawera & Waitara

Readymix Concrete

Depots: Hawera & Wiremu

Ground Spreading

4WD Trucks spreadmark certified, GPS proof of placement.



0508 726 336 or
06 274 5852



Taranaki wide sales, hire and service. Free delivery, competitive prices.

MOBILITY SCOOTERS
and all living aids - we'll help you with whatever you need.

Kevin & Marilyn Bromell
132 HIGH ST - HAWERA
Ph: 06 278 8072 - Freephone 0800 765 763
www.mobilityandmore.co.nz

Underdog by Lorin Symons

I sit on a chair sipping a cup of hot peppermint tea. I have a brief shiver of fear. My stomach is doing somersaults all over the place. I wait for the doorbell to ring. Ding, dong, ding dong. I quickly sprint to the door. It's the mailman. He's holding an envelope, which has my name on it. I grab the letter. I start to read: "Hello Mary. What are you doing? I'll tell you what you are doing, you are going to the Olympics Swimming final."

I look blankly into space almost collapsing. I stroll to my room and start to pack. I slip a picture in my front pocket of my bag. I slam my door closed and lock it with my keys. I hit the road and before I know it it's time for the final.

I zoom into the changing room and slide on my togs and cap and realise I hear no cheering except for booing when I walk out. My heart sinks but I must ignore it.

I must win. I jump in the pool. The water's cold or is that just me? I say to myself. I make a splash. The water releases from its stillness. I take a deep breath. I'm nervous.

I make a tornado of swirling water when I practise my tumble turn. I hear a large shriek of beep honk. I push off the blue tiles and feel like a cheetah leaping across dry dirt.

I see Lauren Boyle's feet about a metre ahead. I storm past and almost run into the yellow lane rope. My feet are like they're on fire or the exhaust of a hot rod.

I see the finish line. I stretch my exhausted arms out and touch the edge of the pool. I see Boyle, she looks bad. I think I've won. The drips fall off my red face and shatter



Lorin Symons with her original story.

like a panel of thin glass.

I lift myself out of the water and walk over to my Mum. My arms are aching and the pain lingers, but I don't care. I say to Mum, "I've won, I've won."

I'm panting and puffing, same with Lauren, but I still couldn't feel better.

I go to the judges. They give me a handshake. I start getting chills up and down

my spine and feel like I've just climbed Mount Everest or swam from New Zealand to Australia.

A tall man hands me a big silver cup. I spy my name engraved in the cup. I rub my wrinkly hands on the smooth surface and give it a big kiss. I see everyone gazing at me in despair.

I step off the oak stage and walk down the narrow hall

to the changing rooms and get changed. I sneak out the back way to avoid the crowd.

I drive home and start a raging fire. It's blazing and the sparks are like fireworks. Then I go to sleep.

Lorin Symons, Opunake Primary School

TOPstitch branding solutions

"Taranaki's One Stop Branding Shop"

195 St Aubyn Street
New Plymouth
Ph: 06 7696460
info@topstitch.co.nz
www.topstitch.co.nz

Locally owned and operated
No Minimum Quantities

- *Garment supply
- *Digital printing
- *Embroidery
- *Team wear
- *Work wear
- *Screen Printing
- *Stickers
- *Clothing labels
- *Direct to garment printing

T.S.L. SPORTSWEAR
Team - sports - leisure

Free embroidery set ups for garment orders over \$200

Proud to have installed the alarm systems for Coastal Care

Risco Wireless Security Alarms

- Camera Sensors, photos of offenders emailed off site during activations
- Control from anywhere in the world via phone app or text messages
- No phone line needed
- Can be monitored
- CCTV camera systems also available

FREE NO OBLIGATION QUOTES

Business/Residential & Rural Alarms, Digital Camera Systems, Driveway Beams, Monitoring

GRAHAM LYNCH SECURITY

Serious on Security
Ph: 06 278 8749
Cell: 021 759 624

Visit www.lynchsecurity.co.nz for more information

RAHOTU - NEW SERVICE

RYCO HYDRAULIC HOSE & FITTINGS

Services

- * Motor Vehicles
- * Quad Bikes
- * Loaders
- * Spreaders
- * Tip Trailers
- * Waterblaster Hoses
- * Full range of hydraulic hose & fittings
- * Hoses made while you wait

Other Services

- * Hydraulic Ram repair
- * Vehicle Recovery
- * Light Engineering
- * Welding
- * Oil Filters
- * If you need it, we will get it.

AUTO MOBILE MECHANICAL SERVICES

5788 Main South Road, Rahotu
Ph: 06 763 8811

Lots of innovative talent at Fieldays

Among the gizmos on show in this year's Mystery Creek Fieldays are an electric motorbike, a kindling cracker, and a remotely piloted aerial system popular with both farmers and movie moghuls.

"Our mission is to advance agriculture," Fieldays chief executive Jon Calder said. "The technology and innovation that Fieldays showcases and supports through our innovation ecosystem are products, concepts and thinking that will continue to ensure New Zealand remains a leading agribusiness nation globally."

Among the companies exhibiting at the Fieldays Innovation Accelerator when the Fieldays open their doors on June 10 is Aeronavics Ltd. Back in 2010 they launched their remotely piloted aerial systems (RPAS). Since then their products have been used by the likes of Disney, Dream Works and NASA. Lucy Marshall from Aeronavics says they are now also becoming mainstream tools within the agricultural sector.

DTEXH20 Co Ltd will also be there with their



National Fieldays are being held this year June 10-13.

device designed to alert dairyfarmers when water enters the milking sheds. The winner of last year's SODA Lift Most Viable Business Award, it can save farmers up to 20-30 litres of milk, or the equivalent of 2-3 cows production every time they milk.

Making a welcome return will be the Kindling Cracker,

originally invented by Ayla Hutchinson as a school science project. Showcased at the 2013 Fieldays, it took out that year's Young Inventor of the Year Award. Last year it took out the People's Choice Award, selling out in two and a half days.

Also back this year are Daryl Neale and Anthony Clyde. Their all electric

farm bike attracted much interest last year. This time they hope to make a similar impression with their utility bike.

Revolutionary Beekeeping which won the Fieldays Innovation Launch NZ Award in 2013 has since built a brand new processing plant in Kerikeri offering North Island-wide honey extraction and harvesting

services.

"With the low dairy payout, beekeeping is becoming a very attractive option, and we can provide not only the hives, but a complete extraction and harvesting service," Revolutionary Beekeeping creator Grant Engel said. "This service is the first of its kind in the world."

Waikato inventor Calvin

Singh whose Maxi Trak Quatro won the Agricultural Invention of the Year in 2010 is also back.

"The World first system is designed to transfer weight from a towed implement to the tractor it is attached to," he said. "Back then it used a lot of number eight wire technology typical of so many kiwi prototypes. We even cut the leaf springs from a wrecked truck we had at the time. The early units took a bit of skill from the tractor driver to operate, but they worked, so we patented it and took it to Fieldays where it won the Inventions Award."

The product has been developed further since then, minus the Number Eight technology, and has secured worldwide patents and registered trademarks.

Another success story has been Paul Anderson. His Two Hands Double Bale Grab was developed out of necessity back in 2008 due to the high cost of handling individual bales. Late last year, he shipped his first container load to Australia, and hopes to move into the North and South American markets.



Farmlands Fuel.

Your needs.

Our solutions.

Farmlands Fuel now has a Territory Manager dedicated solely to the Taranaki region. Kelley Radonich specialises in helping Farmlands shareholders and non-shareholders find the right solution for their fuel needs. If you have a query regarding fuel, call Kelley directly on 027 774 4446.



0800 666 626
www.farmlands.co.nz/fuel

Farmlands Fuel

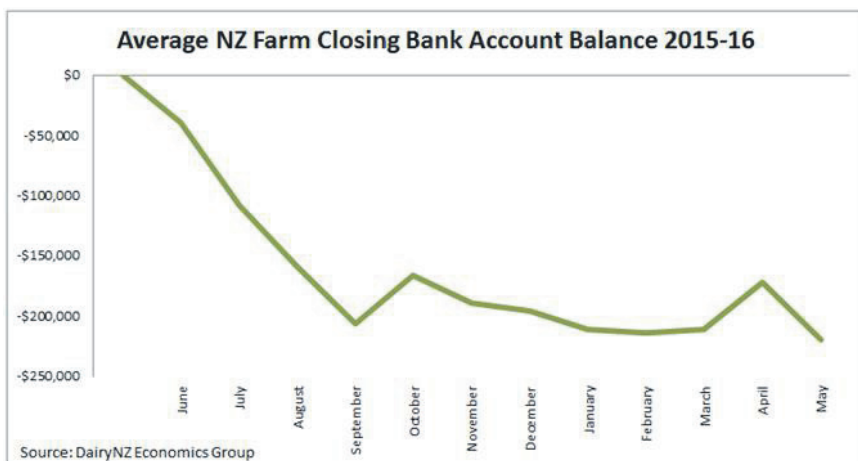
Graph of the forecast cashflow for the average NZ dairy farmer for 2015-16

Cashflows drop steadily throughout winter stabilising at negative levels for the rest of the season – i.e. no ability to reduce overdrafts in the season. This will mean the impacts of the low milk prices in 2014-15 and 2015-16 will be felt for a couple seasons as farmers will be required to repay the additional borrowings/overdraft.

Dividend and livestock sales help stabilise cashflows in October and at the end of the season.

The graph shows the closing monthly bank balance for an average farm in the 2015-16 season with the assumption it starts at zero dollars.

The cash income includes milk sales (including retrospective payments from 2014-15, the monthly advance, including capacity adjustment and



anticipated dividends to end of May 2016), net livestock sales and other dairy cash income.

All cash expenditure relating to the dairy business is included, such as farm working expenses, interest and rent, tax, drawings and capital expenditure.

Challenging time ahead for dairy farmers

DairyNZ is ramping up its support to dairy farmers following Fonterra's announcement of an opening Farmgate Milk Price of \$5.25 per kgMS for the 2015-16 season.

Chief executive Tim Mackle says DairyNZ had already been working on boosting its Tactics for Tight Times campaign to help farmers cope with what is likely to be a "very tough and grim season".

"By our calculations, this forecast will translate into an average farmer's milk income dropping by \$150,000 for this next season. We've worked out that the breakeven milk price for the average farmer now going forward is \$5.70 kgMS, yet under this forecast scenario they'll only be receiving \$4.75 all up in terms of farm income including retro payments from last season and dividends. Annual farm working expenses will need to be reduced to minimise increasing debt levels further. The flow-on impacts to the local economy will be significant as that money

gets spent on things like feed, fertiliser, repairs and maintenance items. There will also be less capital spending in our sector.

"We will see most farmers facing significant negative cashflows for much of the next 12 months leading to an increase in debt and overdraft expenses to get their businesses through another low milk price season. What we need to do is provide advice and wrap support around our farmers to help them cope with all the decisions they will have to make. We don't know when milk prices will pick up so we are planning for the worst but hoping for the best," he says.

"This is going to be a challenging season for a lot of farmers, but it's also an opportunity to strengthen the resilience of our industry if we can use it to become more efficient in how we farm.

"Ultimately this kind of challenge could make us more competitive if we use it to drive efficiency throughout our businesses.

"Many of our farmers have coped with low milk prices in the past, and so this isn't new for a lot of people, or even that unexpected, given where global milk prices have been heading. Farmers have been preparing for the worst case scenario - and this is pretty much it. We'll particularly need to support those farmers who have just bought farms, or who are first year sharemilkers, as they will have more debt to manage. Lower order sharemilkers are also under immense pressure as they have little wriggle room."

"We want to give them the right advice at the right time when they will be making the big calls," he says.

He says DairyNZ's whole farm assessment approach will be used to map out where a farmer can make the most cost-efficient gains on their farm. "This kind of thinking helps customise actions to an individual farmer's particular situation. It's a good way of working out how you can take costs out of your farming system in the short term without

affecting your long term plan or profitability too much.

"We've been planning to run this ramped up support approach for at least the next 18 months. We know that the payments farmers will get through the winter will be particularly low, and that's why we've been pushing everyone to do a cashflow budget. Farmers have got to know their situation if they are going to develop a plan to cope with it. You've got to know how low you will go and how long you will stay there.

"Farmers will be looking for help to make smart choices. It can be hard to think straight and make good decisions if you are under stress and pressure. We'll be bringing all our industry together - the rural support trusts, the banks, the Dairy Women's Network and others - to ensure this is a co-ordinated effort. We need an industry safety net around our farmers to look after their mental wellbeing too," says Mr Mackle.

Dairy Companies give budget thumbs up on biosecurity

The Dairy Companies Association of New Zealand (DCANZ) has welcomed the 2015 budget announcements on biosecurity.

"Short of a major volcanic eruption in Auckland there is very little that trumps the impact that a biosecurity incursion could have on the New Zealand economy. A bad biosecurity incursion would shut down exports and derail much of our country's productive capability," says DCANZ Chairman Malcolm Bailey

"Unlike a volcanic eruption, there are things we can do as a country to lessen the risk of a biosecurity incursion. DCANZ thanks the Government for its commitment to responding to the changes which are altering New Zealand's

biosecurity risk profile."

He says a 3.5 per cent year-on-year growth in passenger numbers heightens the need for greater border protection. DCANZ also supports the additional funding to ensure Import Health Standards continue to be appropriate in terms of the changing nature of biosecurity risks and related scientific knowledge.

DCANZ is encouraging the public to see the levy on travellers within the bigger picture of biosecurity for New Zealand. A 2014 NZIER report found that a medium sized foot and mouth disease incursion would have an economic cost of around \$13 billion for the New Zealand economy, or around \$2800 per capita.

Biosecurity is not just a concern for primary

industries; the introduction of didymo 'rock snot' has permanently altered many waterways and affected recreation activities, Mr Bailey said. "As a country we benefit enormously from both trade and travel. But one lapse in biosecurity on any one day could result in an incursion that severely impacts the livelihoods of thousands or irreversibly changes our natural landscape." DCANZ has also welcomed the Government plans to consult on a Biosecurity 2025 project. "While these budget changes address some immediate areas of stretch, it's also important to be standing back and looking at the systems more strategically," says Mr Bailey

NZ FARMERS LIVESTOCK

For all your Livestock requirements Servicing the Coast

Contact

Tim Hurley - 027 445 1167
Bryan Goodin - 027 531 8511

SH 56 C-E
NOW GST FREE **\$474**
COMPACT VACUUM SHREDDER with ErgoStart Easily converts from shredder to blower

BT 130
WAS \$1675 NOW **\$1457**
with FREE 8" Auger
Great for drilling, planting & building!

STIHL
Right into Outdoor Power Equipment

COLLINS SPORTS CENTRE
Tasman St, Opunake Ph 06 761-8778

Our next issue is due out on June 19
Phone us today to advertise.

For all your agricultural machinery from the only locally run family owned machinery dealer in North Taranaki

GRAHAM HOUGHTON
Your local Sales Rep with a wealth of knowledge. Give Graham a ring today.

AgTraction Taranaki Sales
Waiwakaiho
027 293 2356
or 06 759 8432
www.agtraction.co.nz - graham@agtraction.co.nz

UNDER NEW MANAGEMENT



Mike Barker

p.06 752 4280
m. 027 752 4280

All beef vacuum packed for longer freezer life and better quality. We service all of Taranaki.

50 Carthew Street - Okato email: mike@coastalmeats.co.nz

Coastal Meat PROCESSORS
www.coastalmeats.co.nz



LIKE US ON
FACEBOOK!
OPUNAKE & COASTAL
NEWS

Quality Bikes
Quality Accessories
Awesome Service



YFM550

ONLY
\$11,999 +GST

**4.99%
FINANCE
ZERO DOWN
3 YEARS TO
PAY**



106 - 116 Leach Street, New Plymouth
Ph:067579747|www.mach1yamaha.co.nz



6354275AG

**DO YOU NEED
Car Rego?
Diesel Miles?**

*Pastimes is your local NZTA and
Post Shop Agency*

CALL AT
Pastimes

87 Tasman St, Opunake • Ph (06) 761-8151

Basketball volunteers recognised

The volunteers, they say, are the backbone of any sport. On May 26, Sport Taranaki honoured two of them for their years of service to basketball. Haydn and Bex Langton were named Volunteers of the Month, and Sport Taranaki basketball development officer Vanessa McCarthy turned up at St Joseph's School in Opunake to present the award to Bex, who is also the school's deputy principal. Vanessa is also Secretary of Taranaki Basketball Inc, a position she took over when founder secretary Bex stood down last year. Such is Haydn's commitment to the sport that he wasn't on hand to pick up his award. He was away coaching basketball in Manawatu. He has been on the committee of the Opunake Basketball Association since he was 18. He's now 44. His father Rex is patron.

Although no longer secretary of Taranaki Basketball, Bex has continued as funding officer, which has involved organising travel



Vanessa McCarthy of Sport Taranaki (left) with the Sports Volunteer of the Month Bex Langton.

and accommodation bookings for eight teams. Her other roles have included five years as secretary of the Opunake Basketball Association, and four years of secretary of Taranaki Country Basketball. She has managed and coached school and age group teams for the last 10 years, and run the Opunake junior League for five years.

In January, she managed three New Zealand rep teams at Under 15 and Under 17 level for Basketball Pacific at a tournament in Port MacQuarrie, Australia.

The Langtons have six children, who have taken part in the sport to various levels. "Tara, our daughter was a reserve for the New Zea-

land Under-16 team last year, and is off to LA again this year" Bex said. "All our kids have done really well. It's a great sport for me. It's all about meeting people. It's really cool that you meet people from all different walks of life all around New Zealand. Everywhere you go you run into someone who knows you."

Cobras out-drill Bears

The Colton Coastal Cobras were too good for the Drilco Waitara Bears on May 23-4.

On a freezing cold afternoon at Waitara the Coastal Cobras got the better of the home side in an even match played before a good crowd.

Coastal got out to an early lead and within 20 minutes had three unconverted tries on the board to be 12-0 up through good work from their forwards and centre

Levi McPhee crossing twice. The rest of the half was very even, with both teams completing their sets and good ball control displayed, but there was no addition to the scoring, and the half finished 12-0 to the Cobras.

Early in the second half Coastal leapt out to 18-0, courtesy of another try, but the Bears slowly started to peg the slippery Cobras back as they scored a slick team try, which was finished off by halfback Cruz Rauner to close it up to 18-6. Impressive Coastal hooker Shae Kahui then scored after a classy

15 metre run for Coastal to lead 22-6, and towards the end Bears centre Brent Martin finished the scoring with an excellent run beating three would be defenders to score out wide to make it 22-10 to the Cobras. Coastal were deserved winners but they didn't have it all their own way. Both teams were down on numbers due to injuries and unavailabilities.

For the Cobras, second rower Sean Mare was again impressive and was awarded player of the day, with one of his clever offloads resulting in a try, while brothers Mike and Shae Kahui worked

hard in the forwards. Rugby convert Standoff Mark Davis is starting to find his feet in his new code, while another rugby convert Levi McPhee had a strong first half with two well taken tries.

For the Bears, centre Brent Martin was the pick of the backs, while big prop Shanin Tuuta-Hughes tried hard in a beaten pack.

Scorers: Coltons Coastal Cobras 22; Levi McPhee 2, Arepa Bisop, Trent Deegan, Shae Kahui tries; Mark Davis goal; Drilco Waitara Bears 10; Cruz Rauner and Brent Martin tries; Tyson Lewis goal

Cobras take on Marists

There were mixed fortunes for Coastal Cobras teams against the Marist Dragons on the weekend of May

223-4. The Under-15 team defeated the Dragons 22-0, while in a high scoring match, the Under-9s

managed a 48-48 draw. The Under 6s were beaten 44-16, and the Under 7s 52-16, while the Under 11s lost 54-12.

Gold stars for indoor bowlers

The Taranaki Indoor Bowls Centre played their Champion of Champion Fours on May 23, and the outright winners were the Otakeho Club team of (Gordon Hamley (Skip) Jenny Hamley, Raewyn Fredrickson, Kay Bird. This win gave Raewyn

five centre titles, and her Gold Star. For Gordon Hamley, it was his fifteenth title and his third Gold Star. The Champion of Champion singles was played on May 24, and the outright winner was Sue Bourne from the Cardiff Club.

The Mixed Fours competition was played recently and the winners were the Otakeho Club team of Don Semple (Skip) Gordon Hamley, Jane Augustine and Jenny Hamley, who will now represent the centre at the zone play off in Wanganui in July.

WINTER WARMUPS!

**LADIES
CHOICE**

**Goldair Heated
Throw
\$149.99**



SINCLAIR
Betta
ELECTRICAL

AVAILABLE NOW AT
SINCLAIR ELECTRICAL & REFRIGERATION
31 Tasman Street, Opunake
Phone: 06 761 8084

Electrolux Panasonic dyson PARMCO Haier MITSUBISHI ELECTRIC Fisher & Paykel BOSCH LG

Promote your events in the

**OPUNAKE & COASTAL
NEWS**

Ph/Fax: 06 761 7016 - Call in at 23 Napier Street, Opunake
or e-mail us: ads@opunakecoastalnews.co.nz

People who put in public notices and display adverts in the **What's On Section** for events are welcome to additionally provide extra editorial and photos **FREE OF CHARGE, to help promote the event.**

Local lifeguards receive awards

Surf lifeguards who patrol Taranaki's beaches have been honoured for their hard work and dedication to saving lives at the 2015 Taranaki Awards of Excellence. One of the night's top awards, Volunteer of the Year, was awarded to Vaughan Garrett from New Plymouth Old Boys. Lifeguard of the Year was awarded to Scott Busing from East End SLSC and Club of the Year was awarded to Fitzroy Surf Life Saving Club. Surf Life Saving Clubs in the Taranaki area include Fitzroy, East End, New Plymouth Old Boys and Opunake. Together, they undertook 41 rescues in the 2014-15 season.

Award recipients: Junior Surf: John Dent Trophy - Overall Points 12 Year Boys - 1st: Ryan Clough. 2nd: Jacob McLachlan-Landon. 3rd: Sam Dingle. Jim Morwood Trophy - Overall Points 12 Year Girls - 1st: Lucy North. 2nd: Charlotte Godwin. 3rd: Jacinda McCallum. Dunlop Barrett Cup - Overall Points 13 Year

Girls - 1st: Claudia Kelly. - 2nd: Reebekaa Robinson. - 3rd: Hannah Baker. McLean Cup Overall Points 13 Year Boys - 1st: Fletcher Moles. - 2nd: Robson Old. - 3rd: Oliver O'Connor. East End Cadet Cup (Club): East End. Sports Awards .Top U16 Woman Taranaki Champs - 1st: Aimee Daniels. - 2nd: Maisie Lundon-More 3rd:- Natalie Walsh & Ella Hughes. Top U16 Man Taranaki Champs - 1st: Abe Larsen 2nd: Jack Dingle. 3rd: Max McCallum. Top U19 Woman Taranaki Champs - 1st: Rebecca Cole. - 2nd: Keely O'Keefe. 3rd: Jenna Barrett. Top U19 Man Taranaki Champs - 1st: Thomas Cole. - 2nd equal Michael Watts and Max Anderson. 3rd equal Isaac Hardie-Boys and Gregor Park. Top Open Woman Taranaki Champs - 1st: Rebecca Cole. 2nd: Hannah Sturmer. 3rd equal Katie Watts and Cassie Wilsom. Top Open Man Taranaki Champs - 1st: Joel Meuli. 2nd: Wayne Howart: Adam Beavis Mitchell Owen, Max Hardie-Boys: and Thomas Cole. 3rd: Chad



Opunake Surf Lifesaving Club Award winners from Left Mike Roach, Jemma Pentelow, Holly Horo, Courtney Keech, Mikey Corkill.

Collop and: Lachlan Stevens. Top IRB Crew Taranaki Champs - U21 - 1st: Jerome McSweeny-Novak and Max Anderson. 2nd: Talor Owen and Lachlan Stevens. 3rd: Matthew Cleland and Scott Paterson. Top IRB Crew Taranaki Champs - Senior

1st: Michael Corkill and Nathan Hickey. 2nd: Michael Taunoa and Brooke Sim. 3rd: Michael DeBique and Rebecca Heemi. Top IRB Crew Taranaki Champs - Women - 1st: Jemma Pentelow and Courtney Keech. - 2nd: Mckenzie Moller and Billie Alty. Top IRB Crew Taranaki Champs - Premier - 1st: Scott Busing and Scott Paterson Trophies - Overall/General. Team of the Year: Katie Watts and Jamie-lee Reynolds - Fitzroy SLSC. Junior Team of the Year: Natalie Walsh and Keely O'Keefe - Fitzroy SLSC. Sports Person of the Year: Paul Cracroft-Wilson - Fitzroy SLSC. Sportsman of the Year: Paul Cracroft-Wilson - Fitzroy SLSC. Sportswoman of the Year: Rebecca Cole - Fitzroy SLSC. Junior Sportsman of the Year: Javon McCullum - Fitzroy SLSC. Junior Sportswoman of the Year: Zoe Hobbs - Fitzroy SLSC. Official of the Year: Carol McLeod - Fitzroy SLSC. Lifeguard Instructor of the Year: Michael Corkill - Opunake. Rescue Trophy donated by Beryl Glentworth: Taranaki Search and Rescue Squad. Lifeguard of the Year - Wendy Snowden Memorial Trophy: Scott Busing - East End SLSC. Most Outstanding Instructor Taranaki Lifeguard Service - Peter Steffenson Trophy (Coach of Yr): Allan Rothwell. Michael Taylor Trophy: Jemma Pentelow- Opunake. Volunteer of the Year- James Hunt Memorial: Vaughan Garrett- New Plymouth Old Boys. Dewar Whiskey Cup - Season Interclub Aggregate: Fitzroy. Innovation of the Year: Wood Group PSN. Club Patrol of the Year: Fitzroy. Club of the Year: Fitzroy.

Pihama triples tournament results

The Pihama Indoor Bowling Club ran their annual triples tournament recently with President Graham Dorn welcoming everyone and thanking them for their support.

Winners were Jim Nickel (Skip) Kath Whyte, Gillian Bird (Otakeho Club), Runners up, Trevor Bourne (Skip) Sue Bourne, Margaret Holgate (Cardiff

Club), and third Don Semple (Skip), Willie Fleming, Dave Unsworth (Otakeho Club). Lucky prizes went to Don Stevenson, Judith Mugeridge and Jim Gargan. The Waimate Plains Indoor

Bowls Association recently played for The Aggregate Cup. Otakeho, Riverlea and Kapuni clubs took part, with Otakeho winning, having gone through unbeaten.

Send us your Sports Stories
editorial@opunakecoastalnews.co.nz

kitchens
 from humble to stunning

one off
 gallery & factory

168 waihi road
 hawera 4610
 p - 06 278 4280
 e - paul@oneoff.co.nz

design ~ manufacture ~ installation

designs by paul rogers CKDNZ
 your only fully certified kitchen designer
 in south taranaki **NKBA**

25 years making your dreams a reality

furniture
 new or restored

giftware **COOKWARE**

ANDREW PURSER
panelbeaters LTD

- Windscreen replacements & repairs
- Chassis Straightening
- Spoiler Kits fitted
- Private repairs
- Rust proofing
- Plastic welding
- Insurance work
- 24 hour towing

Courtesy vehicles available

FREE QUOTES

Ph/Fax (06) 278 8233
 22 Cambria Street, Hawera
 Mob 027 249 9489
 A/Hrs (06) 278 7314
 mr.fix@xtra.co.nz

Taurima Resthome

Home Away From Home

Permanent rooms plus respite care and day care all available today.

85 Clawton Street
 New Plymouth 4310
 06 753 5538

PREMIER SPONSORS



ECOLAB[®]
Proud sponsors of Coastal Rugby
CHRIS STANDING
021 791 246 **5**



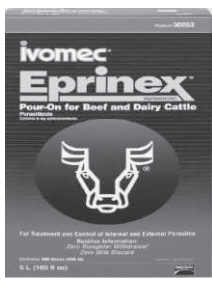
COASTAL RUGBY




RD 1 **17**
Opunake
761 6011
Pungarehu
06 763 8806

Ballance
Natalie Hughes
021 388 957

Proud to be the
Major Sponsors of the
Senior & Junior
Grade Rugby
TONY HAMMOND
027 4 835 758 **4**



Celebrating 21 seasons

On Queens birthday we celebrated our 21st season. If you have a good memory you will know we formed in 1995, 20 years ago but it is our 21st season and that sounded more appropriate for a celebration. Friday night's meet and greet was quite sedate but it was good to catch up with some folk who have not been seen for a while, and the night was enjoyed by all. Saturday was a challenging day for a few different reasons. The logistics of running all Coastal junior games at Raho-tu was daunting, but the respective junior rugby convenors and their helpers ran it like a military operation with no hitches. It helped that the weather was kind, but our luck ran out during the 1pm games, with a mini weather bomb hitting the domain. This made for very challenging conditions, and though the rain largely cleared for the Premiers at 2.45pm, the damage was done to our parade a little, winning the Colts, Div 1 and Prem games. The mighty Div 2 dispatched traditional foe Tukapa. "No point sulking about it," seemed to be the attitude, and with Ray-bern Entertainment cranking the tunes a good time was had by all. On Sunday, the hardy old timers turned



Opunake old timers team were so powerful, the superbly conditioned Skip Burnnard was reduced to waterboy.



BRUCE THOMPSON
FREEPHONE 0800 654 779
MOBILE 027 4455 285 **13**



CHARTERED ACCOUNTANTS
We add value - not just numbers!
Ph: 06 759 9034 Fax: 06 759 9047
10 Young Street, New Plymouth **23**



Proud sponsors of Coastal Rugby
331 St Aubyn St - New Plymouth - Ph 06 759 9957
Freephone: 0800 289 493 **2**

COASTAL DRAINAGE LTD
John Price Ph: 06 763 8223
Fax: 06 763 8227
Mobile 027 4 449 196
5-20 TONNE **12**
Proud sponsors of Coastal Rugby



Sinclair Electrical & Refrigeration Ltd
Phone 06 761 8084
Proud sponsors of Coastal Rugby
OPUNAKE 06 761 8084
MANAIA 06 274 8084
KAPONGA 06 764 6084
OKATO/OAKURA 06 752 4084 **6**



Proud sponsors of Coastal Rugby
McDonald Everest
INSURANCE BROKERS LIMITED
158 Powderham Street, New Plymouth
Ph: 06 758 1199 Fax: 06 758 1188
Members of the Independent Insurance Brokers Assn. **8**



Thomas Fisher hares upfield for the Coastal Okato under 10s.

you. The next big event is diary. Cheers,
June 27th so keep that in you B D



BUTLERS REEF **26**
1133 Main South Rd, Oakura
Ph: 06 752 7765
www.butlersreef.co.nz

ELDERS/INGHAMS COLTS
First on the farm - Sponsoring Coastal Rugby U20s
Rodney Hosking
021 418 010 **Elders PASTORAL** **16**



COASTAL AGRI SERVICES **3**
Our Promise... "PEACE OF MIND"
GRUNDFOS FILTEC Pentair Water NUMEDIC SEtech
97 TASMAN ST, OPUNAKE PH 06 761 7079

btw company
surveyors . planners . engineers . land & g.i.s services
Proud sponsors of Coastal Rugby
179 Courtney Street, New Plymouth
0800 BTW Survey (0800 289 787)
www.btwcompany.co.nz **7**

JFM CONTRACTING
Ph: Jared McBride
on 06 752 4558
or 027 4775 701
Go Coastal! **1**

COASTAL RUGBY



FREIGHT & BULK TRANSPORT LIMITED



Proud sponsors of the Coastal Division 1

For Bulk Transport - Spreading - Palm Kernel, Fertiliser, Lime, Metal, Race Fines, Silage, Hay

SUPPORTING THE COAST FOR 43 YEARS

Opunake 761 7341 - Okato 752 4124

A win and a loss for Division 1



Testing condition faced the Div1 team in their heartbreaking 11-10 loss to NPOB.

Spotswood May 23
 Week 8 we travelled to Sanders Park to play bottom of the table Spotswood. Spotswood got off to a good start through some slick work by their backs and were able to score twice out wide and lead 12-6 at the break. Jamie Fevre slotting two penalties. However as so often happens, we trail at half time and find another gear, and were able to absorb and eventually wear down the opposition and finish strongly. Tries were scored by Brendon Walsh with Tim McKenna grabbing two, and Jamie Fevre slotting three conversions and two penalties. The forwards again showed some real character led by Cody Morgan and Nathan Joyce who were

tireless. The bonus point eluded us, so we went away with only 4 points. Player of the day was Jamie Fevre. **NPOB. May 30**
 Last week NPOB travelled to Coastal where we were celebrating our 21st season birthday. With NPOB having only lost one game all season, it was up to Coastal stand in coach Donald Anderson and manager Steve Chamberlain to direct the ship. In very wet conditions Coastal showed the town boys how to play wet weather rugby. Grinding away in what was a low scoring affair, Coastal led at the break 10-8, with a try to Brendon Walsh, and Jamie Fevre kicking a conversion and penalty. The only points in the second

half came from a penalty to NPOB to spoil the birthday party and win 11-10. It was a great defensive effort by everyone especially in the

last 10 minutes, as NPOB struggled to break our line.

Well done guys. This week we play Stratford at Victoria Park at 1:00. All welcome.

BLUE RIBBONS SPONSORS



The Good Home BAR & RESTAURANT (32)

Value Building Supplies (24)



1 Katere Rd, New Plymouth
 Ph: 06 759 7435

CORKILL SYSTEMS

Proud sponsors of Coastal Rugby
 5 TASMAN ST, OPUNAKE PH 06 761 7531 (11)



Proud to support Coastal Rugby (22)

RURAL CARRIERS

HEARTLAND CONSTRUCTION

FOR NEW HOMES, ROOFING, ALTERATIONS, KITCHENS, DECKS AND ALL FARM BUILDINGS. FOR ALL YOUR BUILDING REQUIREMENTS. PHONE PHIL: 027 236 7129 (19)

Young Carrington Lawyers

Proud Sponsors of Coastal Rugby
 LAWYERS FOR THE COAST
 Thank you for your support (18)

KARAM'S

Clothes on the Coast (9)

Surf Highway 45, Opunake - Ph/Fax 06 761 8139

KINGSWAY MENSWEAR

Proudly supporting COASTAL RUGBY (20)

COASTAL VETERINARY SERVICES

PH 06 761 8105 (21)

WASHER & CO BULLHIRE

(25) PH 06 752 1135 FAX 06 752 1131
 EMAIL: BULLSHOP@XTRA.CO.NZ
 Ph: Sean 0800 285 544 or John 027 4437 100

PICKERING MOTORS

PH: 06 761 8363 - Tennyson St - Opunake
 GO COASTAL! (10)

Newton Gorge Joinery

67 Breakwater Rd, Moturoa
 Ph: 06 751 5065

Heydon Priest Ltd

State Highway 45 - Oakura
 Ph: 06 752 7753 (28)



Coastal Rugby gratefully acknowledges their support sponsors

B & R Barron Builders
 The Print Shoppe
 Rahotu Tavern
 John Blundell for McDonald Real Estate
 Opunake Coastal Pharmacy
 Elite Farm Services
 Farmlands

Brian Hill Builders
 Okato Four Square
 Mason Homekill
 The Decorator Centre
 Coastal Vets
 Collins Sports Centre
 Campbell Contracting
 Geoff Cracroft-Wilson



John & Jacinta Hurley (31)
 NEW PLYMOUTH - INGLEWOOD
 STRATFORD - HAWERA

NZ FARMERS LIVESTOCK

For all your Livestock requirements

Contact

Tim Hurley - 027 445 1167
Bryan Goodin - 027 531 8511 (33)



Proud Sponsors of
 - Coastal Division 2 Team
 - The Coastal Rugby Club Farm

14



GoodinAg
 SUPPORTING FARMERS

www.goodinag.co.nz | 06 7638765



Simpsons Tyres and Service Centre

22 Leach Street - New Plymouth
 Ph: 06 758 0780 (29)



Phone: 06-763 8668 (30)



**Congratulations
Coastal Rugby
21 years on the trot!**

**CHRIS STANDING
021 791 246**

**SINCLAIR ELECTRICAL
& REFRIGERATION**

**Congratulations
Coastal Rugby!
21 seasons and counting**

**SINCLAIR
Beta
ELECTRICAL**

AVAILABLE NOW AT
SINCLAIR ELECTRICAL & REFRIGERATION
31 Tasman Street, Opunake
Phone: 06 761 8084

Electrolux Panasonic dyson Samsung Haier Fisher & Paykel BOSCH LG



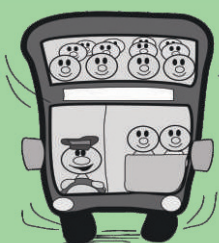
Specialist in Dairy Automation Solutions

**Congratulations
Coastal Rugby - 21 years**

5 TASMAN ST, OPUNAKE, TARANAKI 4616
FREEPHONE: 0800 107 006
PH: 06 761 7531 - FAX 06 761 7336
EMAIL: info@corkillsystems.co.nz website:
www.corkillsystems.co.nz

RENTAL VEHICLES

Congratulations Coastal Rugby



from
Pickering Motors.
Transporting the
boys to their
games for 21 years!

**CHARTER BUSES - VANS - TOUR BUSES
ALUMINIUM SCAFFOLDING
FOR HIRE**

\$35 per day, \$50 weekend.
More than 6 days \$30 per day.

WATERBLASTER FOR HIRE

Petrol 3000 psi 15L/minC

Cost: Half day \$90, Full day \$120, Weekend
\$130. Friday after 3pm return Monday 9am.

Bond for waterblaster and scaffolding \$50.

For more information contact Tracey or Christine at

PICKERING MOTORS

11 TENNYSON ST OPUNAKE PH (06) 761-8363
0800 22 11 20 Email: pickering.motors@xtra.co.nz



COASTAL RUGBY

Coastal Division 2 string wins together for club's 21st year bash

We kicked off the season on a sunny day with a 36-17 away win against Southern in Hawera, who were newly promoted to Division Two after winning their competition last year. With a number of new faces in the team and the dynamics of last years' players, the combination proved vital in the first 20 minutes where Coastal scored the majority of their tries, earning a bonus point.

Game 2 was a home game at Rahotu against Okaiawa, a team that are always challenging opponents. Going into the game with a full bench, another good start ensured points on the board with a half time score of 26 - 3 to Coastal. Oki came back into the game with two soft tries, but with a change of combination, we were able to come out with a decisive 41 - 17 win.

The week leading up to the Patea game was always going to be a challenge with our squad knowing that half our regular forward pack were absent, but despite this setback the guys dug deep and played one of their best games, narrowly losing in the last three minutes due to

Patea having too much ball, breaking our defence and scoring a converted try to win 21 - 17. Although we came out with a bonus point we were gutted with the final result.

Playing Clifton away was always going to be a battle. They were still hurting from last year's semi final loss and were out to win. The boys had to step up their intensity levels to compete in what proved to be one of the best 25 minutes of rugby so far this season, scoring four converted team tries, and producing one of the biggest wins over Clifton for some time. The final score was 52 - 10.

Game 5 was an away game to the Chooks at Tukapa, who are always one of our biggest rivals. Going in to the game with a strong bench was a contributing factor in our 26-10 win. After a challenging first 20 minutes, we started to gain control of the rucks, giving our backs space to move the ball out wide. The second half was a battle until the last 10 minutes, with two team tries scored.

Game 6 was the start of the second round, where we played Southern at Okato. With the full squad really coming together, we won 50-8. Being 13-nil up after 12 minutes was a great start, until Southern fought back with two consecutive soft tries, which made the boys really step up and score more fine team tries to come out on top.

Struggling for players against Okaiawa on their home turf really made the boys work for their close 20-17 win. We had to put three forwards in the back line, which pushed them out of their comfort zone. We spent 20 minutes of the game with only 14 players, as two were sinbinned. Okaiawa playing with the wind in the second half came back. The team held their own against them in the last 10 minutes with their strong defence and came out winners.

Game 8 was against Patea at Rahotu, one of the strongest teams in the competition. Luckily we had a full squad to pick from, which proved vital to our close 26-25 win. With the forwards fighting for dominance, and

good passage of play out wide, we managed to keep Patea out. Even with a converted Patea try close to full time, we kept control of the game to win.

Game 9 was against Clifton at Rahotu. After a big win in the first round, we knew Clifton would be a different side. Going into the game after a good practice proved to be a success, as the boys dominated from the start. With consistent points being scored, through good forward and back play and individual skills, we came out on top with a score of 50-13.

With the pressure on to perform well for the club's 21st anniversary, we trained hard for the game against Tukapa at Rahotu. Tukapa were in control of the ball for the first 10 minutes. We knew if we could keep them out, we would slowly start dominating facets of play. Even when the heavy rain came in, we played some of our best rugby. A hard earned 33-7 win was secured through some great handling skills between forwards and backs.

A club's future



ABOVE:

Future stars of tomorrow. With Mark Goodin, from left Under 6 players. Chloe Muggeridge, Luccas Ripia, Jamie Muggeridge, Mark Goodin, Emma Goodin.

**Congratulations Coastal Rugby
21 Years! from Phil and his team**

**HEARTLAND
CONSTRUCTION**

For new homes, roofing, alterations, kitchens,
decks and all farm buildings.

FOR YOU ALL BUILDING REQUIREMENTS

PH PHIL BROPHY 027 236 7129

COASTAL RUGBY



...It's mine



Okato's Phil Barron (left) and Opunake's Mark Davis vie for the ball in Sunday's old timers' game.

NZ FARMERS LIVESTOCK

Congratulations Coastal Rugby

21 Years!

Contact

Tim Hurley - 027 445 1167

Bryan Goodin - 027 531 8511

100 TASMAN ST, OPUNAKE PH: 761 8213

The Club Hotel Opunake

Congratulations Coastal Rugby!

Dine in or Takeaway Meals available
- TAB -



Three teams one club

The Colts

Continued from page 1

Also there, reminiscing about days playing in the 1980s were Fevre who played for Opunake and Wayne Jones who played for Okato. They agreed the merger had to come.

"Every team was starting to struggle. Numbers in all three clubs were dwindling, and there were talks about amalgamation," Craig said. At that stage, only Opunake had a senior team, while Okato and Rahotu were both in the second division.

Don Morgan played rugby for Rahotu in the 1940s, a time when he remembers rugby had a strong following here.

"We would have four teams playing here in the afternoon," he said. Rahotu could always draw from players who worked at dairy factories like Rahotu, Pungarehu and Oaonui. When the factories closed down through amalgamation, player numbers went down. The big match was always the Meredith Cup match against Okato, who won it more often than not.

Any initial anxieties about the grounds were soon dispelled as the old timers again took to the field. In the end it didn't seem to matter who won or lost. To use the old broadcasting cliché. In the end, rugby was the winner.

Off to Spotswood for what promised to be a good game and a good one it was with good conditions and good numbers. The lads started out with some very good team plays from the backs showing some much better structure set plays and yip even the old drop kick. The forwards battled hard with a bit of some lazy running for the first ten then fronted up with a very solid game from Joe Brophy who was also player of the day. 8-6 to Spotty at the half then a score of 21 all with a couple left on the clock Spotty got a penalty goal left us 24- 21 to spotty. Very unlucky but a very good game to watch.

NPOB last week with wet conditions and once again some good rugby being played by both teams but old boys held us out 12-5 at half time. Second half was a struggle as weather conditions were very wet and gave old boys every reason to not let us celebrate coastal's birthday with a win old boys 35-5. Aiden Beer was our stand out player of the day.

Our next issue is due out on June 22.
Phone us today to advertise on 761 7016

Congratulations Coastal Rugby
21 years of teamwork
from Dennis & Robyn Chard

Fabulous Flowers B & B

Dennis & Robyn Chard
3 Napier St,
OPUNAKE
Ph/Fax: 06 761 8652

The team photo



Prepare for battle. The Rahotu Old timers have a team photo before their match against Opunake on Sunday.



Coastal Vets

COASTAL VETERINARY SERVICES LTD



Congratulations Coastal Rugby
21 years in play!
From the team at Coastal Veterinary Services

24 Tasman St, Opunake

Ph: 06 761 8105

Fax: 06 761 7173

70A Victoria St, Kaponga

Ph: 06 764 6899

Fax: 06 764 6234

TRADES & SERVICES

Need Extra Room?

- WINZ quotes
- Powered
- Insulated
- 3.6m x 2.4m
- So many uses
- Cabins delivered to your site



from \$55 pw



FREECALL
0800 111 344

www.roommatecabins.co.nz

HEARTLAND CONSTRUCTION for concrete work. Ph 027 236 7129.

COASTAL STOPPERS. Phone Glenn 027 524 5745

HomeWays LBP The Repilers - Ph: 06 215 7227

HEARTLAND CONSTRUCTION for building decks. Ph 027 236 7129.

MULTIPLE SCLEROSIS For information and fieldworker services Ph: 06 751 2330 www.mstaranaki.co.nz

Coastal Cleaning Services

If it needs cleaning - you need me. We now mow lawns & cut hedges!

20 yrs exp. Inside or outside. No job too big or too small.
Ph 027 237 8563

McNEIL DECORATING - for all your painting and decorating. Ph: Jason McNeil 027 233 4584

FOR SALE

DID YOU KNOW we stock moon cups, detox foot pads, flea flea, wheat bags, herbal tobacco and cigarettes, diatomaceous earth, pet calm and pet muscle, enema kits, magnesium spray and cream, kefir, stevia, plus plus plus, we also do hair analysis, bowen and adrenal tests. If we haven't got it, we will do our best to get it for you. At Hardy's the health shop in Centre City. We care, 7587553 we deliver.

LOOK AFTER your immunity with system well on special at Hardy's the health shop in centre city. 7587553 we deliver.

PROPOLIS THROAT SPRAY great for air travel to prevent picking up bugs from other people or the air conditioning. At Hardy's the Health Shop in Centre City. Ph: 06 758 7553

KNIFE SHARPENING service now in store \$5 per knife. Collins Sports Centre, Tasman St, Opunake

WANTED TO BUY

SCRAP METAL South Taranaki. S.O.S. - Ph Dave: 0276058437

SCRAP METAL - for all scrap metal Taranaki-wide, give us a call. Molten Metals (06) 751 5367 www.moltenmetals.co.nz

WANTED TO RENT

FARM HOUSE wanted to rent. Will be available to milk Opunake area. Ph/txt: 021 0236 8370 between 9am-5pm.

Call us today to advertise
06 761 7016

PUBLIC NOTICES



St. Barnabas Church

Patronal Day

150 Years Opunake Thanksgiving Service
Sunday 14th June 2015 at 10am
141 Tasman Street, Opunake
Archbishop of NZ Bishop Philip presiding
Period costume optional - Join us for a light lunch

NOTICE OF ANNUAL GENERAL MEETING

Members and the general public are invited to attend the Annual General Meeting of the Oakura Bowling and Social Club, which will take place in the Clubrooms at 1160 South Road Oakura at 2pm on Sunday 21 June 2015.

The purpose of the meeting is to review the 2014-2015 season; to elect a Committee for the 2015-2016 season and to effect changes to the Club constitution.

M J Burr, Secretary.

OPUNAKE BUSINESS ASSOCIATION MEETING

Monday June 8

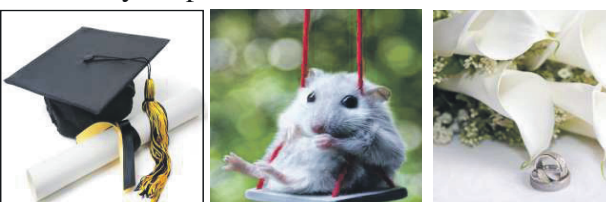
usually the first Monday in the month but due to Queens Birthday has been postponed a week to

June 8, 5.30pm at Everybody's Theatre

Anyone with an interest in Opunake is welcome
Enquiries: Ali Hayward
Opunake Fish Chips and More
Ph: 761 8478

GRADUATED? RECENTLY MARRIED? OR JUST PLAIN TOO CUTE NOT TO SHARE?

Opunake and Coastal News would love to share your photos with our readers!



OPUNAKE & COASTAL NEWS

Ph/Fax: 06 761 7016 - 23 Napier Street, Opunake
or e-mail us: ads@opunakecoastalnews.co.nz

PUBLIC NOTICES

Playcentre

Welcoming any new families into the area. Come and have a look at our child friendly facilities

Session Times: Tuesday & Thursday
9.30am - 12.30pm



Enquiries Contact: 06 763 8658

RAHOTU PLAYCENTRE

Whanau tupu ngatahi - Families growing together

CHURCH NOTICES

Opunake & Okato Co-operating Parish CHURCH SERVICES

St Paul's Opunake Co-op & Rahu
Opunake Cooperating Parish St Pauls, Havelock St,
9.30am every Sunday and the
Rahotu - Wesley - 11am first Sunday of the month.
Oakura - St James - 10am, 2nd & 4th Sundays.
Okato - St Pauls - 10am, 1st & 3rd Sundays.

Opunake Catholic Church

**SUNDAY 8.30 am at Pungarehu (St Martins),
10am at Opunake (Our Lady Star Of The Sea).**

Other areas

Maniaia - Sacred Heart - 1st & 3rd Saturdays at 5pm
(2nd, 4th and 5th Sat at Hawera's St Josephs).
Kaponga - St Patricks, Sunday 8.45am
Okato - St. Patricks - Saturday 6pm

FOR SALE

CAR FOR SALE



1995 HONDA CRV \$5000 ono. Please ph 06 752 4377

PUBLIC NOTICES

NOTICE CONCERNING A LEASE OF MAORI LAND
Te Ture Whenua Maori Act 1993, Sections 147 and 152
In the Maori Land Court of New Zealand
Aotea District

TAKE NOTICE that **WF & MJ Freiman Partnership** and **Muanivatu Holdings Limited** have made applications to the Maori Land Court at Whanganui for a meeting of owners seeking a lease of OMUTURANGI 5D2.

The block is situated on Omururangi Road, Maniaia.

A meeting of the owners of the land will be held as follows:

PLACE:

Hall Lounge, South Taranaki District Council, 74-76
Albion Street, Hawera.

DATE:

Wednesday, 17 June 2015

TIME: 10am

If for any reason the resolutions are rejected or the meeting fails for want of a quorum, the meeting may proceed on an informal basis to consider the possible formation of an ahu whenua trust.

Further information can be obtained from Miss R Wi at the Maori Land Court (please quote reference: A20150002466

C Moke

Deputy Registrar

Aotea Maori Land Court, PO BOX 7178, Wanganui
Ph: 06 349 0770 Fax: 06 349 0771

OPUNAKE & COASTAL NEWS

OUR NEXT ISSUE IS DUE OUT JUNE 19

Call us today to advertise
06 761 7016



HERE TO THERE WITH CARE

Need help getting to your community appointment?
Red Cross Community Transport is here for you - without the worry of transport costs.
Call 0800 733 726 to see if Community Transport operates in your area, and how to book your lift.

0800 733 726
www.redcross.org.nz





WHAT'S ON

JONATHAN YOUNG MP for New Plymouth

Need to speak with your local MP? Monthly clinics being held in Opunake, 3rd Monday of each month. 10am-12pm at the Opunake Business Centre. Please email or phone to book a time.

PIHAMA INDOOR BOWLS

Pihama Hall, Monday nights, 7.30 start

Everyone welcome

OPUNAKE BUSINESS ASSOCIATION

Meet on Monday June 8 at 5.30pm at Everybodys Theatre.

OPUNAKE COUNTRY MUSIC CLUB

First Sunday of each month at the Opunake Town Hall, 1-4pm. All welcome

BARNEY AND CO

Mondays 1.30pm. St Barnabas Church Hall. Games, friendship, cuppa. All welcome.

SCHNITZEL NIGHT

Every Wednesday at the Stony River Hotel, Okato

ELTHAM HISTORICAL SOCIETY

Corner York and Bridge Streets. Open 1.00 p.m. - 3.30 Thursdays and Fridays

SURF INN

Every day free pool. Every Friday free sausage sizzle from 5. Every Sunday afternoon. Pool comp

COASTAL YOUNG FARMERS

Meet 2nd Thursday of every month at 7pm at the Okato Bowling Club.

TARANAKI COUNTRY MUSIC HALL OF FAME, MANAIA

Running every Thursday night from 7.30pm, 11 Surf Highway, South Road, Manaia.

EGMONT EUCHRE CLUB

Meets every Thursday 1pm at the Opunake Bowling Club

CAPE EGMONT HISTORIC LIGHT & MUSEUM

Open 11am - 3pm weekends, Bayly Road, Warea.

TODD ENERGY AQUATIC CENTRE

Family fun times 10.30am to 4.30pm.

COASTAL SINGERS

7pm every Thursday night. Contact 761 8654.

ELTHAM BUSINESS ASSOCIATION FRIDAY MARKETS

8am to 1pm, Carpark of Touch Point, High Street, Eltham

SESQUICENTENNIAL EVENTS

HISTORY BOOK

These are now available from the Opunake Library Plus at \$20 each. Paid orders can be made through all South Taranaki Libraries.

PERCY THOMSON GALLERY

Taranaki Arts Trail Artists Exhibition and the Taonga Iti/Small Treasures Challenge. 28 May - 21 June 2015.

BUTLERS REEF

3rd Avenue, Saturday June 6 from 9pm in the front bar.

ST. BARNABAS PATRONAL DAY

150 years Opunake Thanksgiving Service, Sunday 14th June 2015 at 10am, 141 Tasman Street, Opunake, Archbishop of NZ Bishop Philip presiding.

STRATFORD SINGERS presents Music through the years with the Taranaki Steam Band, Saturday June 13 and Sunday June 14.

OAKURA BOWLING AND SOCIAL CLUB AGM

Members and the general public are invited to attend the Annual General Meeting of the Oakura Bowling and Social Club, which will take place in the Clubrooms at 1160 South Road Oakura at 2pm on Sunday 21 June 2015.

OPUNAKE SESQUICENTENNIAL EVENT

As part of the Opunake sesquicentennial programme, the Opunake Players are presenting Lynelle Kuriger's musical comedy, "Jersey Girls, Farmed and Dangerous" directed by Wendy Smith. The play will run from July 2-10, and features the story of a few months in the world of a Jersey herd, told from the cows' point of view. It's very funny and very musical, with a big cast and quite a few new folk. Tickets cost \$20 each and are available from Sinclair Electrical from 11th June. Cash sales only. BYO drinks.

Memorabilia

From June 29-July 3 the Opunake Players "skite books" will be available for scrutiny at the library from 10am to 2pm each day. These six books go back to the 1940s and anyone interested is most welcome to view them.

Don't be shy!
ARE YOU RECENTLY Married?
 We would love to share your special day with our readers! Send in your photo and details of how you met etc, to: editorial@opunakecoastalnews.co.nz

TOTALSPAN
 STEEL BUILDINGS
 WHO CAN? TOTALSPAN!

25 YEAR STRUCTURAL GUARANTEE
 5 YEAR WORKMANSHIP

WHISTLE-UP A FIELDAYS DEAL!

HUGE SAVINGS ON ALL KITSET BUILDINGS!
UP TO 15% JUNE ONLY!

Visit us at: 470 Devon Street West New Plymouth

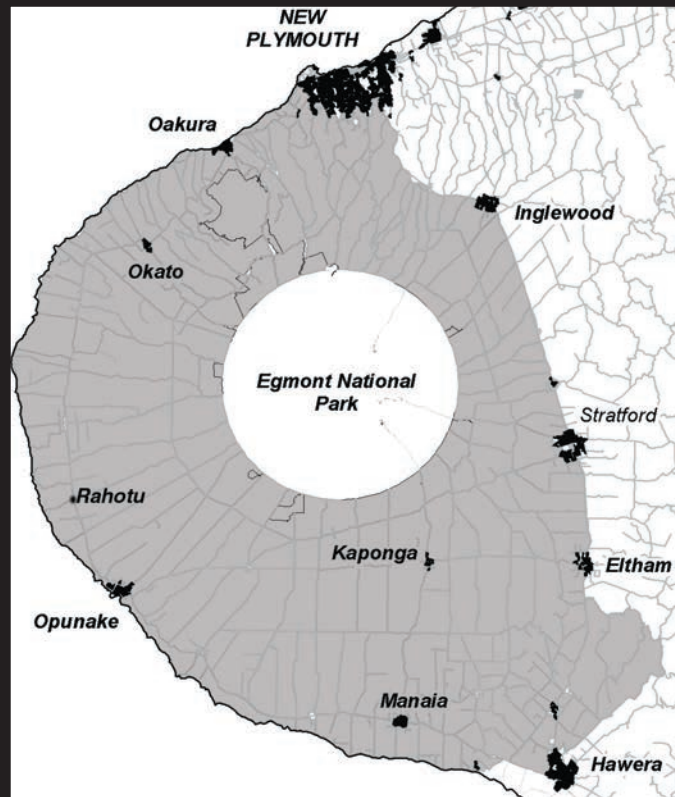
0800 TOTALSPAN
 (0800 868 257)
TOTALSPAN.CO.NZ

4 UTILITY SHEDS TO BE WON!
 ENTER AT TOTALSPAN.CO.NZ

WORTH OVER \$1,600 EACH

*Terms & Conditions apply. See website for details.

WANT TO DO BUSINESS IN OUR AREA? TALK TO US



Opunake and Coastal News is distributed free to every home and business within the rural area, bounded in the north by the New Plymouth city border, extending east to Egmont Village, and around to the edge of Stratford, south to the Hawera city border and inland to Kaponga and through Eltham.

We are an independent newspaper based in Opunake, which is targeting both the towns and rural communities and we aim to have news coverage within all the areas of our distribution.

We want to be involved with your business call today and discuss your marketing options with the team.

COVERING THE COAST

Promote your business or event in our area call us on (06) 761-7016



• 23 Napier St, Opunake • Ph/Fax 761-7016
 • email: ads@opunakecoastalnews.co.nz

Promote your events in the **OPUNAKE & COASTAL NEWS**

Ph/Fax: 06 761 7016 - Call in at 23 Napier Street, Opunake or e-mail us: ads@opunakecoastalnews.co.nz

People who put in public notices and display adverts in the **What's On Section** for events are welcome to additionally provide extra editorial and photos **FREE OF CHARGE, to help promote the event.**

Imaging for a better world

The June exhibition on the Virtual Tart website at www.tart.co.nz is **Images pour un monde meilleur** (images for a better world), of collages made from old engravings, by well-known French artist Philippe Lemaire. I'd known his work for years, and it was a delight to meet him in Paris last year. Do have a look. It has been a VERY long time coming, but I have finally done a complete update of my website

at www.dalecopeland.co.nz with new work in each room ... it has been ages. And, the scary bit is I'm attempting to grade to 5th Dan black belt in Taekwondo in September in Auckland, at a seminar with Master Moore of Australia, closely followed by a Taekwondo tour of historic sites in Korea. And what has this to do with art, you ask? Well, I'll be in Korea at the end of September, so I'm not



Image Philippe Lemaire

sure if I'll be able to change the exhibition over. So if anyone wants an exhibition, September will be half the

usual price and will end on 22nd September. October will be the usual price for the month, but will start early,

on 22nd September and go to the end of October. If you're interested, first in, first served. And all that.

It's winter here, but all good. Wood fires at night, clear days. I hope life is good for you, all of you.

Dale Copeland

What's On 
3rd Avenue
Saturday June 6
 In the Front Bar from 9pm

1133 Main South Rd, Oakura
 Phone 06 752 7765 - www.butlersreef.co.nz

A N I N V I T A T I O N



You are warmly invited to attend the Taranaki Arts Trail Artists' Exhibition

and the Taonga Ihi / Small Treasures Challenge 28 May - 21 June 2015

Opening at the Percy Thomson Gallery Thursday 28 May, 6.00pm

Taranaki arts trail

PERCY THOMSON GALLERY
 MIRANDA ST. STRATFORD
 PERCYTHOMSONGALLERY.ORG.NZ 06 765 0917

STRATFORD SINGERS PRESENT MUSIC THROUGH THE WAR YEARS

GALLIPOLI TO THE GOLDEN ERA OF SWING with THE GREAT TARANAKI STEAM BAND

Master of Ceremonies Bryan Vickery

TET KINGS THEATRE, STRATFORD

Saturday, 13 June 2015 at 7.30pm
 Sunday, 14 June 2015 at 2pm

Tickets: \$20

Stratford Information Centre 06 765 6708

Hawera i-SITE 06 278 8599



Arts Trail opens at Percy Thomson



Artist Linda McFetridge with her work 'Blooming Pohutukawa.'

The Percy Thomson Art Gallery was packed to overflowing with artists and art enthusiasts on Thursday May 28. The occasion was the official opening of the Taranaki Arts Trail. Gumboot Tango provided plenty of entertainment with their lively music.

An information packed wallet of pamphlets is available with the Trail divided into North, East, South West and New Plymouth. There is a brief bio about each artist, accompanied by address, phone number, email and (in many cases) website. Each pamphlet also has a

good map. The dates for visiting are 13/14 June. After a brief speech by Wayne Morris, who is a member of the Taranaki Arts Trail Trust, the event was officially opened by well-known artist Dale Copeland, who is Patron of the Taranaki Arts Trail Trust. Her bio in

the 'West' pamphlet reads, "My studio is my refuge, my haven. Joy in jetsam, philosophy in flotsam." The array of brilliant art on display at Percy Thomson Art Gallery was impressive in its diversity and expertise. "I think the art is of a really high standard," enthused well-

Jersey girls comes to Opunake



Ellie Hodder and Brody Chapman as Bub the heifer and Geordie the hereford.

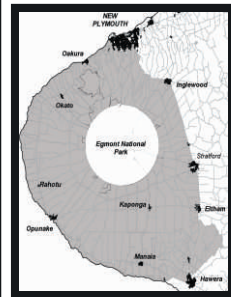
The musical comedy “Jersey Girls, Farmed and Dangerous” which was conceived and written on Ihaia Rd is coming to the stage at The Lakeside Playhouse. Lynelle Kuriger’s unique take on life beyond the tanker track through the eyes of the herd and their attendant bulls, with all their human frailties and foibles, is funny, naughty, touching, and oh so real. A rural audience will recognise every cow in the herd, and some might recognise themselves. Directed by Wendy Smith, the large cast (or is that herd) are working hard perfecting not only the dialogue, but a number of evergreen 1950s doo-wop songs which punctuate the story.

Helen Duff is vocal coach, and Katarina Papageorgiou is adding some choreography moooves. The show will run in early July, with bookings opening on June 11. The cast is Ellie Hodder, Michelle Julian, Honey-Rose Hutchins,

Elaine Spencer, Stephanie McKenzie, Sheree Hart, Diane Baldie, Christine Ryan, Irena Ryan, Ariana Bracey, Janine Mullin, Chloe Danz, Andy Whitehead, Brody Chapman, Ben Morgan and Mike Smith.

WANT TO DO BUSINESS IN OUR AREA?

Talk to us today!



Opunake and Coastal News is distributed free to every home & business within the rural area, bounded in the north by the New Plymouth city border, extending east to Egmont Village and around to the edge of Stratford, south to Hawera city border and inland to Kaponga & Eltham. We want to be involved with your business. Call today and discuss your marketing options with us.



OPUNAKE & COASTAL NEWS

Promote your business or event in our area, call us on:

Ph/Fax: 06 761 7016 - 23 Napier Street, Opunake or e-mail us: ads@opunakecoastalnews.co.nz

Arts Trail at Percy Thomson cont

known artist Margaret Scott. One artist, with an eye-catching, huge acrylic painting entitled ‘Blooming Pohutukawa’ was Linda McFetridge. She admits to “no plan” as she paints what she sees. She feels inspired by what Taranaki has to offer

having returned to her roots after living in Auckland for three years. Her bio (‘West’ pamphlet) reads, “Perception point, negative space, light and scale are the dominant elements in the composition of Linda’s paintings. Drawn from collections of her own photography and

personal experiences.” I loved the vibrant colours in Karen Dey’s ‘untitled’ painting of a tui. The Opunake artist has this to say in her bio (South Pamphlet): “I work with acrylic on canvas, with my heart and soul going into every painting. My inspiration comes from my love of the

sea and its surroundings.”

Make sure you see this exhibition, which continues until June 21, as well as finding time to visit as many studios as possible (June 13/14).

Rolland McKellar



Karen Dey’s ‘untitled’ exhibit features a tui.

EVERYBODY'S THEATRE

Opunake - MOVIES - BOUTIQUE THEATRE – HIRE
For information email: everybodystheatre@gmail.com or check facebook- Everybody's Theatre

Lollies, popcorn, drinks, ice-creams, chocolate bars, tea/coffee for sale
Upstairs Adults \$10, Students 4-16 \$8 Under 4 Free
Downstairs All \$12, Senior Citizens \$8. No Eff-pos

NOBLE – BOUTIQUE NIGHT \$25 Ticket

SUNDAY 7 June - Doors Open 6:30pm – movie starts at 7pm

They broke everything but her spirit. They took everything but her dream. This is the incredible true story of a fearless Irish heroine driven by her daring vision to escape the slums of Ireland and risk everything on the streets of Vietnam

\$25 includes comfy sofa seating, complimentary wine or beer and tasty snacks.

Tickets for the Boutique are available from PASTIMES or book with Debbie 0272902892, Maree 0273137494. Upstairs viewing at normal rates. Also on Wednesday 10 June @7pm



Tinkerbell and the Legend of the NeverBeast 6 & 27 June @ 1pm

Fun and talented animal fairy Fawn believes you can't judge a book by its cover. PG

The Women in Gold

Action, Adventure | 1hr 50min | PG 13 Sony

Friday 5 June @ 7pm

Sixty years after fleeing Vienna, Maria Altmann (Helen Mirren), an elderly Jewish woman, attempts to reclaim family possessions that were seized by the Nazis. Maria embarks upon a lengthy legal battle to recover this painting and several others, but it will not be easy, for Austria considers them national treasures.

Spongebob: Sponge out of water

Saturday 13 June @ 1 pm

Animated, Comedy, Family, Kids | 1hr 33mins | PG | Violence Paramount

Mad Max: Fury Road

R16 | 120 min | Action, Adventure, Sci-Fi

It's been 45 years since the collapse of civilization, and resources such as water, food and oil are scarce. Survivors cling to life at the Citadel, a fortress controlled by the tyrannical Immortan Joe. When Imperator Furiosa (Charlize Theron) leads a band of rebels on a daring escape through the Wa... Morestelard, she forges an alliance with haunted loner Max Rockatansky (Tom Hardy). Together, they embark on a high-speed race through the desert, pursued relentlessly by the gangs of the apocalypse. Warner Bros

Friday 12 June & Sunday 14 June @7pm

A Little Chaos 'ARTHOUSE'

R|117 min|Comedy, Drama, Romance

Two talented landscape artists become romantically entangled while building a garden in King Louis XIV's palace at Versailles. Kate Winslet, Alan Rickman, Stanley Tucci

Wednesday 17 June & Sunday 28 June @ 7pm

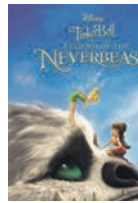
Avengers: Age of Ultron

M Friday 19 June, Saturday 20 June @ 1pm

Pitch Perfect 2

PG-13

Sunday 21 June, Friday 26 June @ 7pm



Wednesday	Friday	Saturday	Sunday
	5 June @ 7pm The Women in Gold	6 June @ 1pm Tinkerbell and the Neverbeast	7 June @ 7pm NOBLE BOUTIQUE
10 June @ 7pm Noble	12 June @ 7pm Max Max - R16	13 June @ 1pm Spongebob: Sponge out of water	14 June @ 7pm Mad Max - R16
17 June @ 7 pm A Little Chaos	19 June @ 7 pm Avengers: Age of Ultron	20 June @ 1pm Avengers: Age of Ultron	21 June @ 7 pm Pitch Perfect 2

Car enthusiasts



Motorists may give a second take when passing through Tataraimaka. A police car parked in a garage is in fact not real.

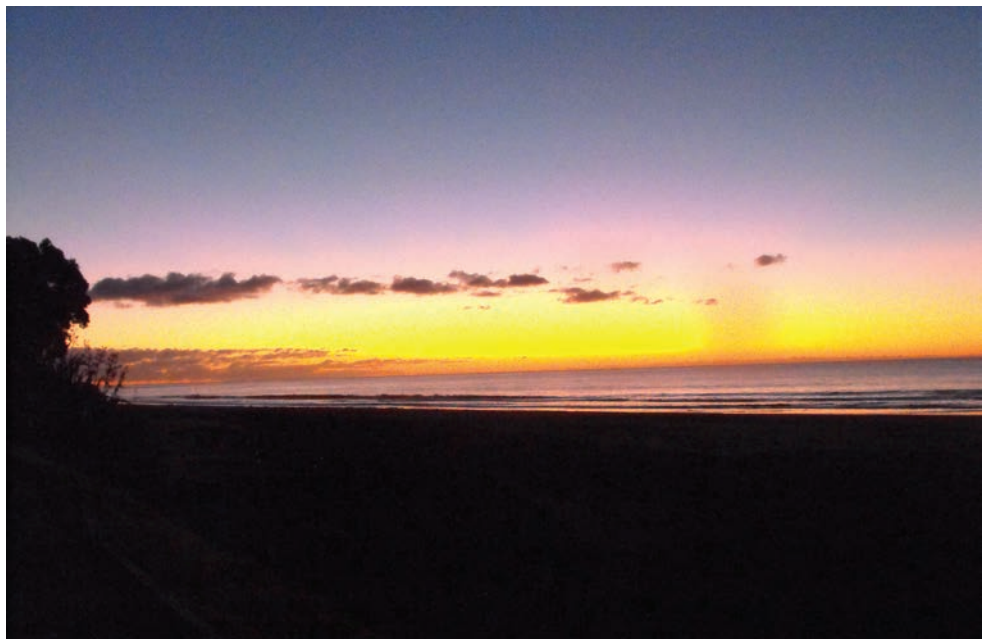
Signwriter Graeme Scown from Sign Group, Taranaki put the life sized image of the Victorian police car on the garage door. "We haven't had a crash here since it's been here," said Graeme. A Holden enthusiast, Graeme was impressed with the Show and Shine at the Rahotu Tavern car park on Mother's Day. There was a great turnout of cars.



ABOVE: A 1940 Mercury owned by Gary Webber from New Plymouth at Trev's Show and Shine.



The ever popular volkswagon at left and right.



Oakura Beach photographed a week ago. Who says we don't live in paradise!



Engine Rebuilders

NEW PLYMOUTH

Engine Reconditioning & Automotive Machining

THE IDEAL COMBINATION FOR REFURBISHING YOUR...

- ✓ classic cars
- ✓ trucks
- ✓ tractors





Classic Components

ENGINE PARTS

New Engine Parts for Classic Vehicles

TGM 18421

Molesworth Street

06 - 758 5263

06 - 758 5262

When brass meets voice



Members of the Great Taranaki Steam Band

Stratford Singers and the Great Taranaki Steam Band will combine for a musical event, 'Music Through the War Years - Gallipoli to the

Golden Era of Swing'. The performances will be on stage at the TET Kings Theatre, Stratford on June 13 and 14. The combination of melodies,

lyrics and rhythms will stir the emotions as we listen to war favourites such as 'Keep the Home Fires Burning' and 'It's a Long Way to Tipperary'.

These songs sustained us through the war years and after. Then swing became the new thing - and so many of the tunes such as 'String of Pearls' and

'American Patrol' became standards. When forty voices merge with thirty-five Big Band instruments

the result can only be awesome. Tickets are available from Hawera I-Site, and Stratford Information Centre.